



GOTS ELEVATOR CO.,LTD.

www.gotselevator.com

Company headquarters: 13F, No. 12 Building, Yuanxin City Pioneering Center,
Zengcheng Low-Carbon Headquarters, No. 400 Xincheng Main Road, Zengcheng District, Guangzhou City
Guangdong Production Base: No. 9 Chuangyuan Road, Lubao Town, Sanshui District,
Foshan City, Guangdong Province
Email: gots@gotselevator.com

Tel: 86-13802537799



It is an ordinary information publication. We keep the right of alter the product design and description at any time.
If there is any dispute out of the literal meaning of any product description, use or quality, the description and alteration of any sales contract, our company will not bear any responsibilities herefrom.
Because of the restriction of the printing technology if there is any slight difference between the actually machining color and that from this pamphlet, please take the actual material and color sample as the criterion.

2025 version

GOTS[®]
ELEVATOR

25 years of professional elevator
intelligent manufacturing

25th

Source
factory
10
Top 10 Sales in China



- Passenger elevator
- Freight elevator
- Observation elevator
- Dumbwaiter elevator
- Hospital elevator
- Villa elevator



ENTERPRISE CULTURE

BUSINESS PHILOSOPHY

Advanced management is essential to the enterprise. It initiates upon a bright future by innovative technology.

SERVICE IDEA

It always gives first priority to the clients' interest with sincere communication. It formulates the perfect and realistic solutions. Therefore, it enhances the clients' values.

ENTERPRISE MISSION

Develops, manufactures, sells, supplies the more cozy, secure, superior products and services. Becomes a leading and individual elevator supplier.

ENTERPRISE SPIRIT

Safe, pragmatic, compatible, innovative.

IT ENHANCES TECHNOLOGY, QUALITY AND SERVICE

It pursues 100% satisfaction from clients. It lets you feel the cozy travel in full courses.

CORPORATE VALUES

Innovation: It keeps innovating and improving. It pursues the sustainable development.

Esteem: We esteem each other. We acknowledge and inter-supplement the culture differences.

Development: We think highly of responsibility, the sound team competitive power. We keep developing and enhancing ourselves.

Talents: We esteem the value of every employee. Talents are the foundations for GOTS to develop forward.

Fighting: We advocate the positive innovation spirits. We try to lead the elevator industry both at home and abroad.

BRAND CULTURE

It satisfies the clients' individual requirements by the sustainably innovated products. It improves the people's building traffic environment by green, attractive, unique, low-consumption properties. It stresses upon and meets the customers' needs. It is the fundamental motive power for existence and development of GOTS Elevator Company.

CONTENT

01 | Focus upon the enterprise

Enterprise culture
Company introduction
Developing procedures

05 | Brand honors

System authentication certificate

07 | Intelligent manufacturing

Smart digital factory
Web of things
Core technologies
Intelligent technology

13 | Product system

Passenger elevator
Observation elevator
Hospital elevator
Freight elevator
Dumbwaiter elevator
Villa elevator
Elevator decoration

49 | Global case studies

Project examples

51 | International cooperation

Global partners

53 | Star-rated Service

One-stop service

55 | Product parameters

Function table
Civil engineering parameters table

ENTERPRISE INTRODUCTION

Founded in 2008, GOTS Elevator Co., Ltd. is located in State Economic & Technical Development Zone, Zengcheng District, Guangzhou City, Guangdong Province, China. It totally covers an area of about 110,000 square meters. It has got over 70 inventions and technical patents. It has 100m high elevator test tower. It is a modern and professional elevator enterprise that integrates the research, development, design, manufacture, installation, transformation, repair into one. GOTS elevators and escalators cover more than 20 series. It annually produces above 20,000 sets of various elevators. The products are wide-spreading all over the country. We also sell the products far and wide including over 70 countries and regions. It sets more than 270 branches and service networks in China. It establishes research, development, cooperation relationships with multiple domestic institutions of higher learning. It gradually sets up the complete technology and products' independent R&D system. It combines with IT integration technology. It offers building vertical traffic human-centered intellectual management. It supplies the effective and energy-saving transport mode. It provides the fast-growing modern societies with the rising strength.



110000m²

Factory house areas



100M

Elevator test tower



20000+

Annual productivity



270+

Branches and service networks



500

TOP500 manufacture



GOTS team

Complete technology and products' independent R&D system



Multiple certificates

Top 500 Manufacturing Enterprises in Guangdong Province

Hidden Champion Enterprise of Guangzhou City

National High-Tech Enterprise

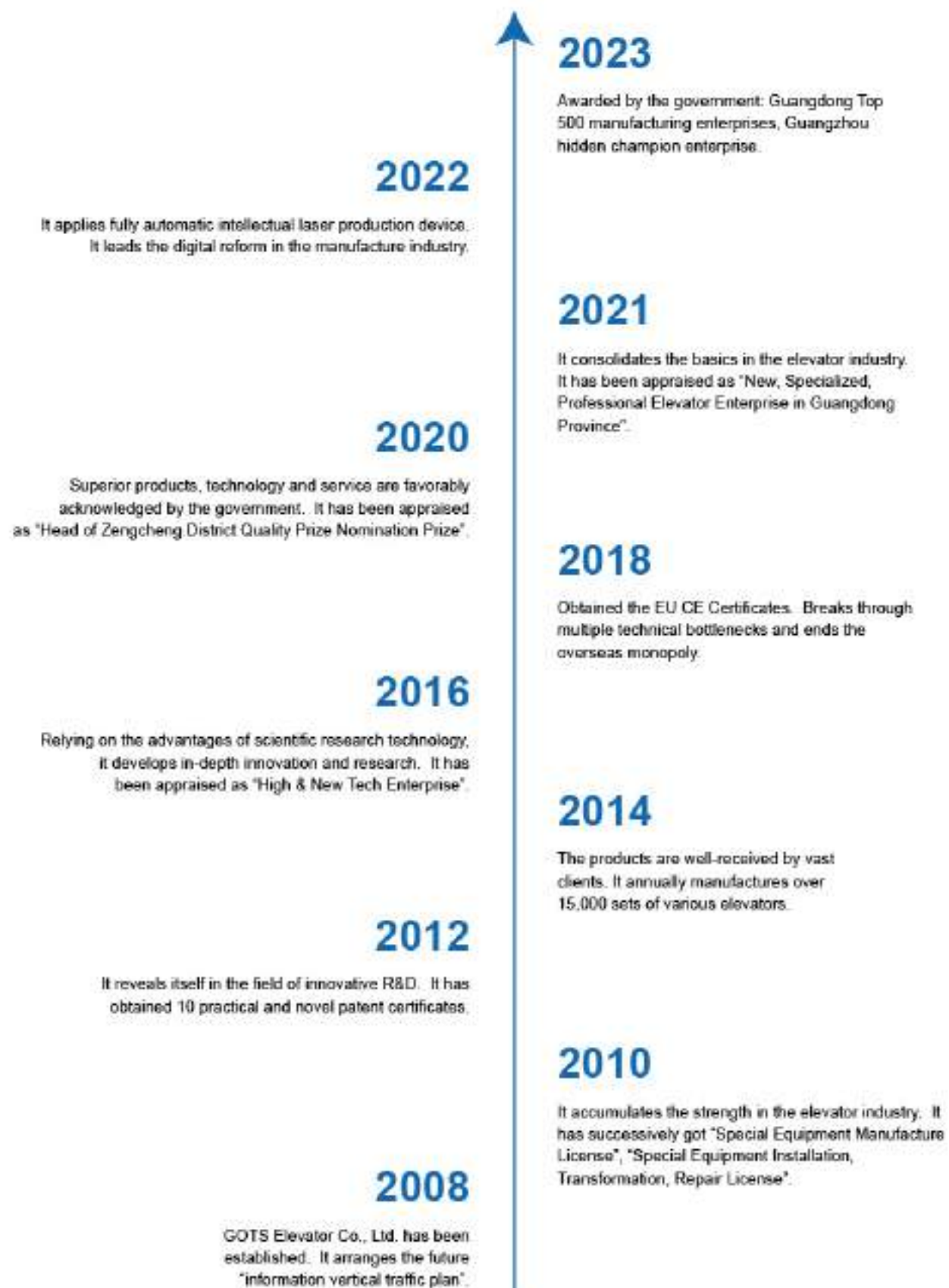
Specialized, Refined, Distinctive, and Innovative Enterprise

International ISO Quality Management Certification Enterprise

Innovative Small and Medium-sized Enterprise

Low-Noise, Energy-Saving, High-Precision, and Intelligent Elevator Research Center

SPAN THE CURRENT OF THE TIMES



FOREIGN TRADE DISTRIBUTOR PARTNERSHIP POLICY



Brand Honors

Superior products, technology and service are favorably acknowledged by people in all walks of life. GOTS Elevator Company gets fruitful achievements all the way through.



-CE Certificate (Machine Room-Less, TKU)

-CE Certificate (Machine Room, TKU)



SMART MANUFACTURE BOOSTS THE INDUSTRIAL PROMOTION

GOTS Elevator owns the powerful and comprehensive manufacture capacities. The products apply core parts with independent research, development and manufacture. It has successively introduced flexible and automatic production lines, robot bending machine, robot welding, digital laser cutting machine, digital bending machine, painted flow line etc. It largely increases fine and accurate elevator manufacture.





ELEVATOR WEB OF THINGS CLOUD PLATFORM



BIG DATA CENTER

Deployed in the command center to manage the status of all elevator equipment within the jurisdiction.



REMOTE MONITORING APP

Functions: Mobile monitoring, on-site debugging, remote elevator call, and recording inquiry.



MULTI-ELEVATOR MONITORING CENTER

Real-time monitoring of multiple elevator operation statuses; fault and maintenance statuses are clearly displayed.

CORE QUALITY OUTSTANDING IN THE WORLD



HIGH-END DOOR-MOTOR SYSTEM

The advanced VVVF control technology applies to the door-motor system, makes door starting, speeding up, braking curves smooth and fluent. Bring comfort to passengers by quiet switches.



INTELLIGENCE CONTROL SYSTEM

Adopting a fully computerized intelligent control system, it realizes intelligent management such as multi microcomputer, modular, and networked control, and provides real-time feedback on elevator operation.

PERMANENT MAGNET SYNCHRONOUS AND GEARLESS TRACTION MACHINE

By adopting gearless traction technology, noise can be reduced by up to 10 decibels. No need for lubricating oil, more in line with environmental requirements.



ULTRA-THIN MACHINE-ROOM-LESS TRACTION MACHINE

Smaller shafts achieve larger car sizes, suitable for various shaft situations. The utilization rate of the shaft is as high as 58.5%



HORIZONTAL TRACTION MACHINE

The permanent magnet synchronous technology adopts energy-saving and environmentally friendly technology, LED lighting power supply, and digital control, which significantly reduces energy consumption by more than 40%.

SMART INNOVATION FUELS COLLABORATIVE ECOSYSTEMS

DESTINATION APPOINTMENT LAYERS ELECTION SYSTEM

Passengers only need to choose the destination floor, and the system will automatically plan the route and guide passengers to take a ride.

INTELLIGENT ELEVATOR DISPATCHING SYSTEM

It will assign the passengers with similar destinations to the same elevator, thus alleviating the passenger congestion and improving the overall operation efficiency of the building.

GROUP CONTROL MANAGEMENT SYSTEM

It will have unified management of elevators in the same building, rational operation plan and make the passengers in order.



Please proceed to Elevator No. 1

SMALL MACHINE ROOM PASSENGER ELEVATOR

SPACE-OPTIMIZING

In order to save the building space, explore a bigger space utilization rate of the building; bring about the more sensitive & reliable running and the more attractive and graceful building, passenger elevator with machine room applies the compact and intensive permanent magnet synchronous and gear-less traction machine and specially-designed control cabinet. Machine room is exactly the same as that of the well.

PROMPT AND CONVENIENT ENERGY-SAVING

Compared with the traditional elevator, passenger elevator with machine room is more compact in structure. It is light and handy with convenient installation, prompt and convenient maintenance. It reduces the building cost and saves the energy by the intensive space effect.



Saving up to 40% energy



Save 50% of the machine room area



Improve space utilization efficiency



Traditional organic room



Small machine roomless

MACHINE ROOM-LESS PASSENGER ELEVATOR

FIT EASILY INTO , BUILDING VALUE ENHANCEMENT

It applies machine room-less structure. It flexibly places control cabinet and traction machine into the well. It saves the building area with concise and attractive model. It leaves design margin for both architects and developers. It lowers down the comprehensive construction cost.

LOW ENERGY CONSUMPTION , SAVE SPACE

It takes low energy consumption as standard. It fully considers the utilization rate and cost of the building space. It applies compact layout and flexible design. It exquisitely combines with various buildings. It is your first-choice in modern and characteristic buildings.



Saving 30% of construction area



Energy-saving device save about 30% of energy



Machine room-less design brings about more free and easy building design



Traditional organic room



Machine roomless



SIGHTSEEING ELEVATOR

Fine and exquisite sightseeing elevator enhances the grade of the building. Furthermore, it becomes a highlight in the whole mansion. GOTS sightseeing elevator enjoys mobile scenes. It has delicate visual aesthetics, the perfect and comfortable travel.

Handrail



HSGF-02



HSGF-03



HSGF-05



HSGF-06

HOSPITAL ELEVATOR

GOTS hospital elevator not only delivers passengers. Because of its special use, it has special and strict requirements to use and functional properties of elevators. GOTS hospital elevator accurately controls elevator running speed. It is smooth and comfortable in operation. It creates a peaceful and graceful space for broad passengers.



OPERATION BOX FOR THE DISABLED

RD-Y01 Standard

Ceiling: Hairline stainless steel, acrylic plate, LED lighting
Car wall: Hairline stainless steel
Handrail: Stainless steel flat handrail
Floor: PVC



FREIGHT ELEVATOR

THE LOAD IS AS SAFE AS A MAN'S HOME

Combined with cutting-edge technology such as elevator engineering technology, strong drag system, highly strengthened mechanical structure design, not only can accommodate a large number of goods, and can operate in a variety of harsh environments, with efficient and reliable, solid and durable, precise leveling and other characteristics, widely used in factories, warehouses, shopping malls and other freight places.

ENERGY SAVING, CONVENIENT AND EFFICIENT

Compared with the traditional elevator, the passenger elevator with machine room structure is more compact, light and compact, easy to install, convenient maintenance, its intensive space effect, reduce construction costs, save energy.

10-ton Freight Elevator

The heavy-duty car chassis of this freight elevator handles heavier loads, adapting to diverse transportation environments and demands. The reinforced floor design ensures exceptional durability and longevity.

-  Diverse specifications with high logistical flexibility
-  Robust structural design
-  Unique cold-plate extruded sill design
-  High load capacity, creating lasting value



Traditional organic room



Small machine room

MACHINE ROOM-LESS FREIGHT ELEVATOR

THE EXQUISITE DESIGN COMES FROM HEAVEN

With low-carbon environmental protection as the design concept, energy saving and consumption reduction. At the same time, the advanced permanent magnet synchronous gear-less traction technology is adopted to maximize the use of well space, save building area and reduce construction costs as the ultimate goal. Fully reflecting the green humanistic spirit of the product. It is the best choice for factories, warehouses, department stores, property centers, libraries and other units to transport goods.

EASY AND EFFICIENT INSTALLATION

In elevator applications, the difficulty of installation is also an important factor affecting freight conditions. We can provide customers with efficient and easy installation solutions to ensure the normal progress of construction projects.

-  Cost-control philosophy integrated into design
-  Simple structure, easy maintenance
-  Energy-efficient, eco-friendly, and stable operation
-  Optimized lubrication system with durable construction



Traditional organic room



Machine room-less

FREIGHT ELEVATOR CAR

RD-H01

Standard

(Stainless Steel) Optional

Car Top Decoration: Integrated spray-painted steel plate

Three-sided Car Walls/Door: Premium spray-painted steel plate

Car Floor Decoration: Premium patterned steel plate

Door Operation: Side-opening door

Control Panel: Split-type

Lighting: LED downlights

Ventilation: Large circular fan

Spray Paint Color: Wrinkle Gray



HUMAN-MACHINE INTERFACE



MORD10-CK

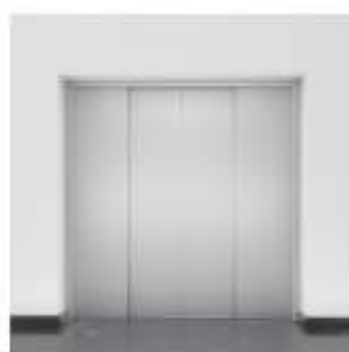


TS-W18

LANDING DOOR SERIES



A101 (Standard)
Side opening door



A102 (Optional)
Center double fold doors

DUMBWAITER ELEVATOR

SLIDE-WAY WITH NOVEL DESIGN

Double section material special purpose slide ways are of unique design. It connects with running through door slider. It strengthens the smooth elevator door laminating. It also reduces door-plank gap. It is convenient for adjustment.

THE SAFETY AND STABILITY OF SILENCE

Dumbwaiter elevator provides small freight elevators in various buildings with the prompt, economical and convenient vertical transport. It greatly saves time and labor resources. It is widely applicable for delivering food and drinks, dining ware, daily commodities etc. in the hotel, restaurant, bank, hospital and so on.

RICH SPECIFICATIONS AND MODELS

Load range: 100kg-300kg. Door modes can be divided into windowsill type which is convenient for direct entry/exit of the goods and floor type which is easy for goods cart.



Windowsill type
(up / down straight-opening)

Ground type
(up / down straight-opening)



VILLA ELEVATOR

GOTS villa elevator provides you with comfortable enjoyment. Multiple comfortable experiences are small in noise and convenient in installation. It fulfills a magical and wonderful household environment for you, also the elderly, sick, disabled home the best on the lower transport.



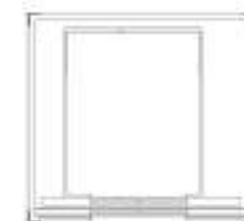
Smooth operation



Noise-reducing



Economic and attractive



Center opening



Side opening



Manually operated door



BRILLIANCE UNVEILED, LIFE ELEVATED

Design experts redefine elevator car walls with versatile decorative panels, creating vibrant spaces through dynamic color palettes, transforming every ride into an inspiring journey.



TS-J01 Options:

Ceiling: Integrated ceiling TS-D19, mirror stainless steel hollow panel, acrylic transparent, LED downlights

Back wall: Middle mirror stainless steel, auxiliary panel hairline stainless steel

Side wall: Hairline stainless steel

Floor: TS-V23 PVC

TS-J18 Optional

Ceiling: Integrated ceiling,TS-D19,mirror stainless steel hollow panel,acrylic transparent,LED downlights

Three-sided wall:Middle mirror etched stainless steel,auxiliary panel hairline stainless steel

Floor: TS-V23 PVC



TS-J25 Optional

Ceiling:Integrated ceiling,mirror stainless steel,linear LED light bar,LED downlights

Back wall: Middle steel plate baked enamel(sand-textured white), hidden light band,auxiliary panel hairline stainless steel

Side wall: Hairline stainless steel

Floor: TS-V23 PVC



TS-B28 Optional

Ceiling: Integrated ceiling,sandblasted white steel plate,linear LED light bar,LED downlights

Back wall: Middle sandblasted white steel plate,linear LED light bar,coffee gold auxiliary panel hairline stainless steel

Side wall: Middle sandblasted white steel plate, coffee gold auxiliary panel hairline stainless steel

Floor: Artificial marble



TS-J09 Optional

Ceiling: Integrated ceiling,rose gold mirror stainless steel hollow panel,acrylic transparent,LED downlights

Three-sided wall: Rose gold mirror etched,partial rose gold hairline stainless steel

Floor: TS-S01 Optional stone



TS-J28 Optional

Ceiling: Integrated ceiling, champagne gold mirror stainless steel, linear LED light bar, LED downlights

Back wall: Middle mirror etched stainless steel, auxiliary panel champagne gold hairline stainless steel

Side wall: Middle wood grain transfer-printed stainless steel, auxiliary panel mirror stainless steel

Floor: PVC/marble



RJ-03 Optional

Ceiling: Split-type ceiling RD-03(titanium), titanium mirror stainless steel hollow panel, acrylic transparent, LED downlights

Three-sided wall: Partial sandblasted mirror stainless steel with titanium gold accent (center panel), auxiliary panel titanium hairline stainless steel

Floor: RB-03 Optional PVC stone mosaic



TS-J34 Optional

Car Top Decoration: Split-type ceiling, titanium mirror stainless steel acrylic light-transmitting panel, LED downlights

Rear Wall: Central panel – partially sandblasted titanium mirror stainless steel; auxiliary panel – titanium mirror stainless steel

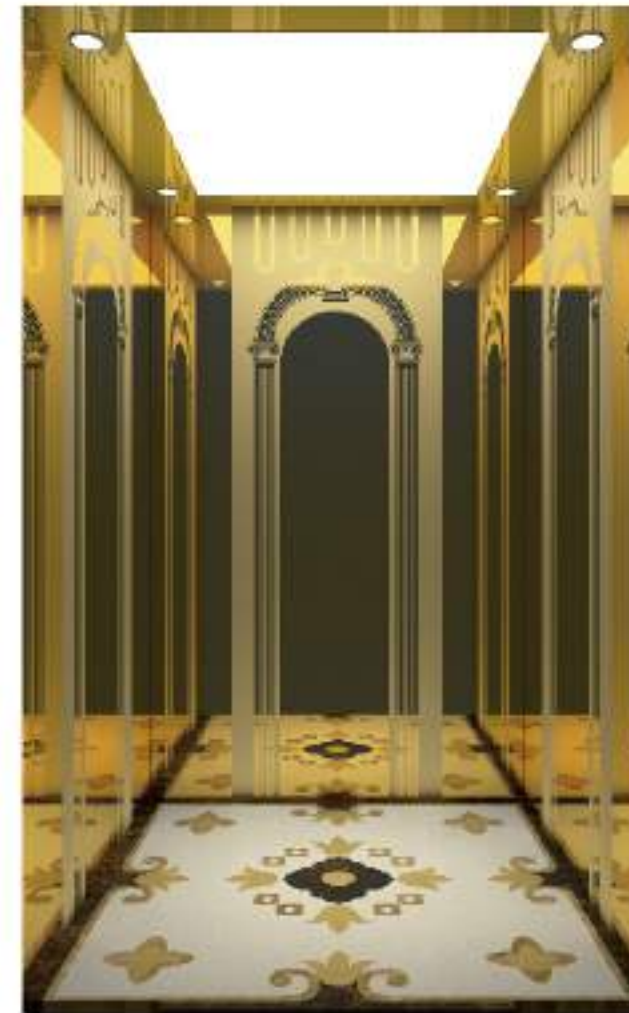
Side Wall: Central panel – partially sandblasted titanium mirror stainless steel, auxiliary panel – titanium mirror stainless steel

Front Wall: Titanium mirror stainless steel

Door Header: Titanium mirror stainless steel

Car Door: Titanium mirror stainless steel

Floor: Optional PVC mosaic flooring



TS-J35 Optional

Car Top Decoration: Split-type ceiling with titanium hairline stainless steel, acrylic light-transmitting panel, LED downlights

Rear Wall: Central panel – titanium mirror etched stainless steel; auxiliary panel – titanium mirror etched stainless steel

Side Wall: Central panel – titanium mirror etched stainless steel; auxiliary panel – titanium mirror etched stainless steel

Front Wall: Titanium hairline stainless steel

Door Header: Titanium hairline stainless steel

Car Door: Titanium hairline stainless steel

Floor: Optional PVC mosaic flooring



TS-J36 Optional

Car Top Decoration: Split-type ceiling with titanium hairline stainless steel, acrylic light-transmitting panel, LED downlights

Rear Wall: Central panel – mirror etched stainless steel; auxiliary panel – titanium hairline stainless steel

Side Wall: Central panel – mirror etched stainless steel; auxiliary panel – titanium hairline stainless steel

Front Wall: Titanium hairline stainless steel

Door Header: Titanium hairline stainless steel

Car Door: Titanium hairline stainless steel

Floor: Optional PVC mosaic flooring



TS-J37 Optional

Car Top Decoration: Split-type ceiling, titanium hairline stainless steel, acrylic light-transmitting panel

Rear Wall: Central panel – titanium mirror etched stainless steel; auxiliary panel – titanium hairline stainless steel

Side Wall: Central panel – titanium mirror etched stainless steel; auxiliary panel – titanium hairline stainless steel

Front Wall: Titanium hairline stainless steel

Door Header: Titanium hairline stainless steel

Car Door: Titanium hairline stainless steel

Floor: Optional PVC mosaic flooring



TS-J13 Optional

Ceiling: Split-type titanium mirror stainless steel, acrylic transparent

Back wall: Middle titanium mirror etched stainless steel, auxiliary panel black titanium mirror stainless steel

Side wall: Middle titanium mirror stainless steel, auxiliary panel black titanium mirror stainless steel

Floor: TS-S06 Optional stone mosaic



TS-J29 Optional

Ceiling: Integrated ceiling, black titanium mirror stainless steel, linear LED light bar, LED downlights

Back wall: Middle marble veining pattern stainless steel, hidden light band, black titanium metal trim, auxiliary panel black titanium

Side wall: Wood grain transfer-printed stainless steel panel, black titanium metal trim

Floor: PVC/marble



RG10 Optional

Upper and lower covers: Titanium hairline stainless steel

Ceiling: Split-type ceiling, titanium mirror stainless steel, acrylic transparent, LED downlights

Sightseeing Wall: Safety laminated glass

Car wall: Titanium hairline stainless steel

Handrail: Titanium hairline stainless steel round tube

Floor: PVC



RG11 Optional

Upper and lower covers: Steel plate baked enamel, decoration light

Ceiling: Split-type ceiling, hairline stainless steel, acrylic transparent, LED downlights

Sightseeing Wall: Hairline stainless steel, safety laminated glass

Car wall: Hairline stainless steel

Handrail: Stainless steel round tube

Floor: PVC



RG12 Optional

Upper and lower covers: Steel plate baked enamel,

Ceiling: Integrated ceiling, hairline stainless steel, LED downlights

Sightseeing Wall: Safety laminated glass

Car wall: Hairline stainless steel

Handrail: Dual stainless steel

Floor: PVC



RG13 Optional

Ceiling: Mirror stainless steel, acrylic lighting fixtures

Car wall: Hairline stainless steel, safety laminated glass

Handrail: Stainless steel single tube

Floor: PVC/marble



TS-B49 Optional

INTEGRATED CEILING

Ceiling:
Painted steel plate, linear led light bar, LED downlights

Back wall:
Central panel: Marble-veined stainless steel, ambient lighting, metal trim;
Auxiliary panel: Mirror sandblasted champagne gold

Side wall:
Central panel: Black titanium mirror stainless steel, metal trim
Auxiliary panel: Mirror sandblasted champagne gold

Front wall:
Mirror sandblasted champagne gold

Door Header:
Mirror sandblasted champagne gold

Car Door:
Mirror sandblasted champagne gold

Floor:
PVC floor



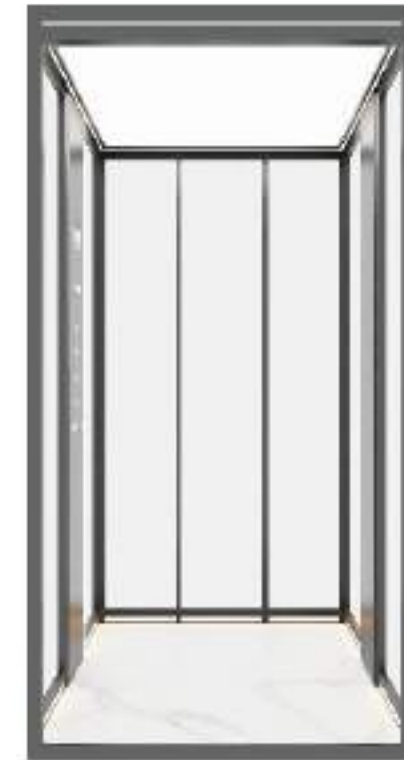
G2505 (Silver frost design) Optional

Ceiling:
Silver frost profile frame+LED light band, acrylic transparent

Car Wall:
Silver frost profile frame with 5+5 tempered laminated clear glass, integrated silver frost control panel with recessed LED strip, recessed LED strip in skirting

Handrail: None

Floor: Bianco carrara marble slab



G2505
(Champagne Gold - flat design)

TS-B26 Optional

INTEGRATED CEILING

Ceiling:
Sandblasted silver steel plate, LED downlights, linear LED light bar, rear ventilation system

Back wall:
Rear ventilation system, linear LED light bar
Auxiliary panel: Sandblasted gray steel plate

Side wall:
Central panel: Sandblasted gray steel plate,
Auxiliary panel: Black titanium hairline stainless steel

Front wall:
Black titanium hairline stainless steel

Door Header:
Black titanium hairline stainless steel

Car Door:
Black titanium hairline stainless steel

Floor: Artificial marble



G2507 (Champagne gold - flat design) optional

Ceiling:
Champagne gold profile frame, LED light strip, acrylic transparent

Car Walls:
Champagne gold profile frame with 5+5 tempered laminated clear glass, integrated champagne gold control panel with recessed led strip, recessed LED strip in skirting

Handrail:
Champagne gold hidden handrail, hidden light strip

Floor:
Bianco carrara marble slab



G2507
(Prussian blue)

PROMPT TOUCHABLE CONVENIENT TRUSTWORTHY



Integrated cop (Optional)
10.1-inch picture display

Cop (Standard)
7-inch color LCD display

Integrated cop (Optional)
10.1-inch picture display

BUTTON

Standard



A18

Optional



BR27A



BS34C



A19



TS-W20

Standard 2
(Basebox-free design)

LOP



TS-W18

Standard 1
(Basebox-free design)



TS-W29

Optional 1
(Basebox-free design)



TS-W21

Optional for commercial projects 2



TS-W35

Optional
(Basebox-free design)



TS-W36

Optional
(Basebox-free design)



TS-W37

Optional
7-inch touch screen

LANDING DOOR SEIRIES



TS-M01 Standard
(Main Landing)
Hairline stainless steel



TS-M02 Standard
(Non-main Landing)
Powder-coated Steel Plate



TS-M18 Standard
Mirror etched stainless steel



TS-M08 Standard
Titanium etched stainless steel



TS-M21
Mirror etched stainless steel



TS-M22
Mirror etched stainless steel



TS-M30
Framed glass door



TS-M31
Mirror etched stainless steel



TS-M32
Mirror etched stainless steel



TS-M33
Mirror etched stainless steel



TS-M34
Rose gold mirror etched
stainless steel



TS-M35
Rose gold mirror etched stainless
steel



CEILING

TS-D35

Mirror stainless steel, acrylic
panel

INTEGRATED DESIGN



TS-D19

Mirror stainless steel, acrylic lighting
decoration, LED downlight



TS-D21

Mirror stainless steel, LED downlight,
ceiling lamp



TS-D22

Mirror stainless steel, acrylic lighting
decoration, LED downlight



TS-D31

Hairline stainless steel, acrylic
lighting decoration, LED downlight

SPLIT-TYPE DESIGN



TS-D33

Acrylic lighting decoration, titanium
stainless steel, hidden lighting



TS-D34

Rose gold stainless steel, acrylic lighting
decoration, hidden lighting

STONE FLOOR

HANDRAIL

PVC FLOOR



TS-V23 Standard



TS-V24 optional



TS-V25 optional



TS-V26 optional



TS-V27 optional

STONE FLOOR



TS-S01 optional



TS-S02 optional



TS-S05 optional



TS-S06 optional



TS-S08 optional



TS-F01

Matte short-grain stainless steel tube



TS-F07

6mm short-grain stainless steel with rounded Head



TS-F06

Combination of round wood and titanium gold



TS-F08

Dual-link stainless steel with titanium gold finish

DECORATIVE COLOR CARD

RAL7042
Drizzle Gray

For use in freight elevators.

RAL7035
Light Gray

For use in passenger elevators,
villa elevators

RAL9016
Water Lily White

RAL7037
TV Gray

RAL1015
Ivory Yellow

RAL6019
Apple Green

RAL5023
Lake Blue

RAL5017
Xinfu Blue

RAL5020
Ocean Blue

MULTIPLE CHOICES PRIVATE RESIDENTIAL SOLUTIONS

TRACTION VILLA ELEVATOR

Traction drive mode,
Sensitive and convenient stable and comfortable operation.



STEEL BELT TYPE VILLA ELEVATOR

Polyurethane material layer needs no lubrication, high safety. It is more effective energy-saving.



STRONG DRIVE VILLA ELEVATOR

No counterweight balancing device, small covering space of well.
Low noise, energy-saving and environment-protection.



COMPACT SPACE, GRAND COMFORT

Smooth journeys, joyful moments, empowered by technology



Minimum hoistway external dimensions:
1010x1040mm
Minimum pit depth: 100mm
Minimum overhead height: 2400mm



Compact Shaft, Spacious Cabin
Maximum hoistway space utilization rate: 64%



Full suite of safety components
Car-integrated design addresses limitations of L-shaped platform lifts



Full-view glass cabin
Customizable aluminum profile colors

STEEL BELT TYPE VILLA ELEVATOR

TRACTION VILLA ELEVATOR

STRONG DRIVE VILLA ELEVATOR



HUMAN MACHINE INTERFACE



TS-P4
Standard
7-inch color LCD display



GOTSCM006



GOTS13301
Standard
Black touch control panel



GOTSCF006



GOTSCM005



TS-W18
Standard 1
(Basebox-free design)



TS-W20
Standard 2
(Basebox-free design)



TS-W21
Optional for commercial projects 2
(Basebox-free design)



TS-W35
Optional
(Basebox-free design)



TS-W36
Optional
(Basebox-free design)



TS-W37
Optional
7-inch touch screen

ALUMINUM ALLOY WELL FRAME

Independent frame glass design has no extra increase of the building cost with fine light transparency. It integrates with indoor decoration into one. Installation position can be chosen by the user. It resists any corrosion with long service life. It chooses industrial-level aluminum alloy. Glass applies safety laminated glass.



THE COLOR OF GLASS



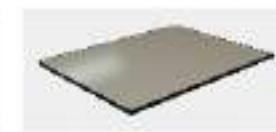
Transparent glass



Frosted glass



Blue star grey glass



Brown glass

ALUMINUM ALLOY FRAME WITH CUSTOMIZABLE COLORS



Dynamic gray



Prussian blue



Patina bronze



Van Dyke brown

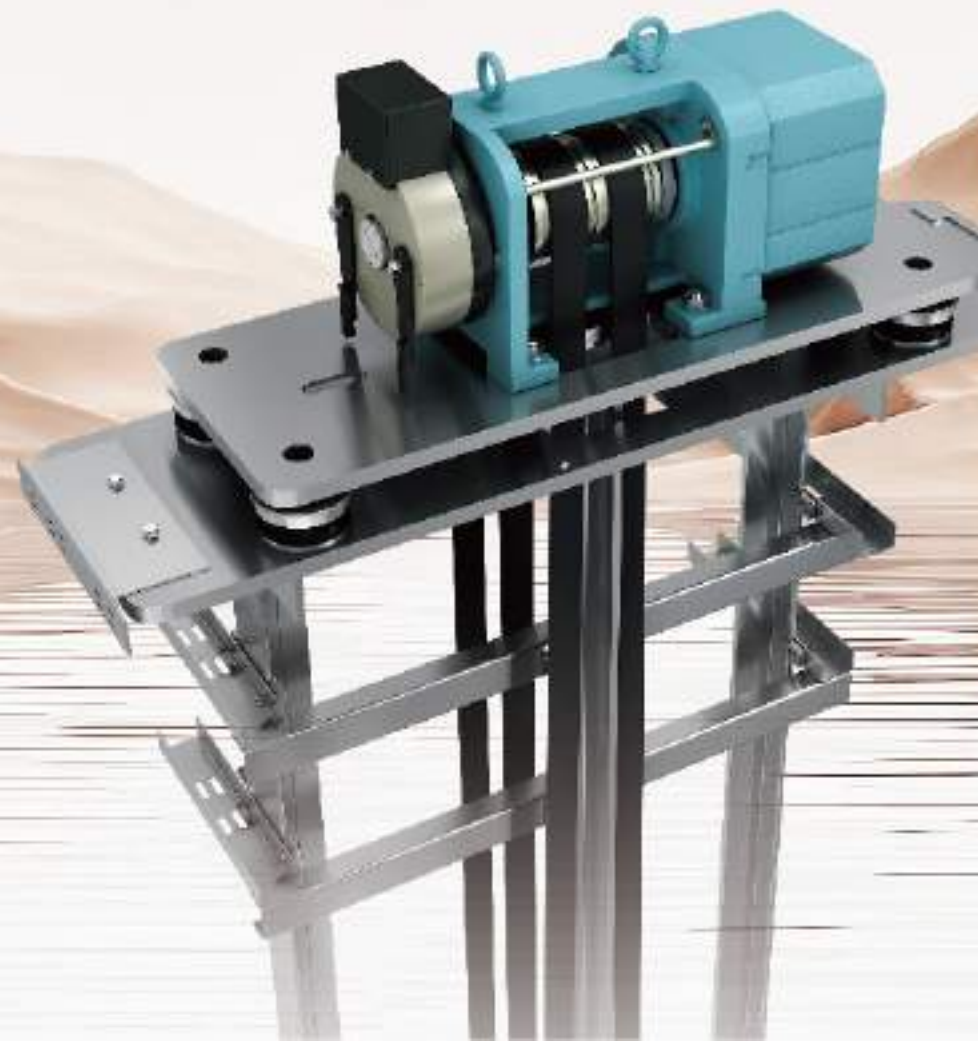


HIGH PRECISION CONTROL CABINET

Ultra-thin design enables concealed installation of control cabinets. Refined, compact, quiet, comfortable, safe, flexible, and highly adaptable.

PERMANENT MAGNET TRACTION MACHINE

Main bearing service life: 20 years. Compact structure with flexible layout. Ultra-low noise: Operational sound level <math>< 65\text{dB}</math> (within human comfort range). 125% overload braking with dual brake block redundancy for enhanced safety. Stator winding withstands 150°C, adaptable to diverse operating conditions.



20 years
Main bearing service life

5 ADVANCED SYSTEMS



POWER FAILURE RESCUE SYSTEM

System automatically detects grid failure and initiates rescue mode to safely guide the elevator to the nearest floor.



LIGHT CURTAIN PROTECTION SYSTEM

Detects objects as small as 50mm, monitors door movement in real-time, and ensures passenger safety.



INTELLIGENT AUTO-RESCUE SYSTEM

Integrated control cabinet diagnoses faults, activates drive or brake release, and autonomously rescues passengers.



ONE-TOUCH EMERGENCY CALL SYSTEM

Pre-registered emergency contacts (>3) receive instant alerts via one-touch activation during malfunctions.



CABIN ENERGY-SAVING MODE

Automatically powers off lighting and ventilation after prolonged inactivity.



Smart Technology
Intelligent Solutions



Comfort & Sustainability
Scenario-Optimized Experience



Safety & Stability
Multi-Layered Protection



Considerate Support
Hassle-Free Maintenance & Service

GLOBAL PROJECTS

GOTS elevator integrates cutting-edge global technologies and intelligent solutions, delivering seamless services to buildings worldwide while establishing a benchmark where efficiency meets intelligent innovation.



Tajikistan business center



Nigeria arabell apartments



Tajikistan baston city



Kazakhstan vatan inshoot



Nigeria mayfair building



Tajikistan baston city



Premium Plaza



Kazakhstan central park



Tajikistan international college



Tajikistan Parliament building

GLOBAL COLLABORATION

GOTS elevator crafts brand influence through premium quality, strategically expanding in global markets and co-creating a new development blueprint with worldwide partners.



CAREFUL SERVICES FULL CARING



PERFECT FUNCTION

S Standard O Optional

| Travel function | |
|--|--|
| S VVVV drive | Motor rotating speed can be precisely adjusted to get smooth speed curve in lift start travel and stop and gain the sound comfort. |
| S VVVV door operator | Motor rotating speed can be precisely adjusted to get the more gentle and sensitive door machine start / stop. |
| S Independent running | The lift can not respond to outer calling, but only responds to the command inside the car through the action outside. |
| S Automatic pass without stop | When the car is crowded with the passengers or the load is close to preset value, the car will automatically pass the calling landing in order to keep maximum travel efficiency. |
| S Automatically adjust door opening time | Door-open time can be automatically adjusted according to the difference between landing calling or car calling. |
| S Recopen with hall call | In the door shutting process, press recopen with hall call button can restart the door. |
| S Express door closing | When the lift stops and opens the door, press door shut button, the door will be closed immediately. |
| S Car stops and door open | The lift decelerated and levels, the door only opens after the lift comes to a complete stop. |
| S Command register cancel | If you press the wrong floor command button in the car, once continuous pressing of the same button can cancel the registered command. |
| O Anti-rushback | In the light lift load, when there more commands appear, in order to avoid the unnecessary parking, all the registered callings in the car will be cancelled. |
| O Open the door in advance | When the lift decelerates and enters into door open zone, it automatically opens the door to enhance the travel efficiency. |
| O Direct parking | It completely accords with distance principle with no crawling in the leveling. It greatly enhances the travel efficiency. |
| O Group control function | When three or more same model lift groups are combined in use, the lift group can automatically choose the most appropriate response. It avoids the repeated lift parking, reduces the passengers' waiting time and increases the travel efficiency. |
| O Duplex control | Two sets of same model lift can unanimously respond the calling signal through the computer dispatch. In this way it reduces the passengers' waiting time to the greatest extent and enhances the travel efficiency as well. |
| O On-duty peak service | Within the preset on-duty time, upward transport from the home landing is extremely busy. The lift are continuously dispatched to the home landing in order to satisfy on-duty peak service. |
| O Off-duty peak service | Within the preset off-duty period, the lifts are continuously dispatched to top floor in order to satisfy off-duty peak service. |
| O Door open time extending | Press special button in the car, the lift door keeps open for certain period of time. |

| Man-machine interface | |
|--|---|
| S More-touch button for car call and hall call | Newer more-touch button is used for operation panel command button in the car and landing calling button. |
| S Floor and direction indicator inside car | The car shows the lift floor location and current travel direction. |
| S Floor and direction indicator in hall | The landing shows the lift floor location and current travel direction. |
| O Voice announcer | When the lift normally arrives, voice announcer informs the passengers about the relevant information. |
| O Car-assisted operation box | It is used in the large loading weight lifts or the lifts with crowded passengers so that more and more passengers can use the car. |
| O Operation box for the handicapped | It is convenient for the wheelchair passengers and those who have vision problems. |
| O Intelligent calling service | The car command or help-way calling can be locked or connected through special intelligent board. |
| O IC card control function | All parties' landings can only input car commands through IC card after the authorization. |

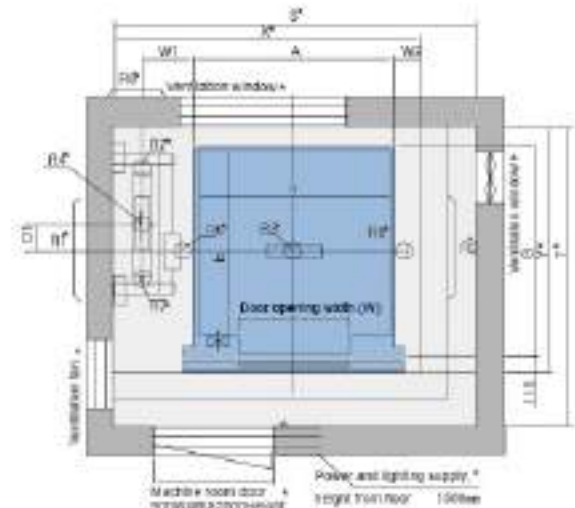
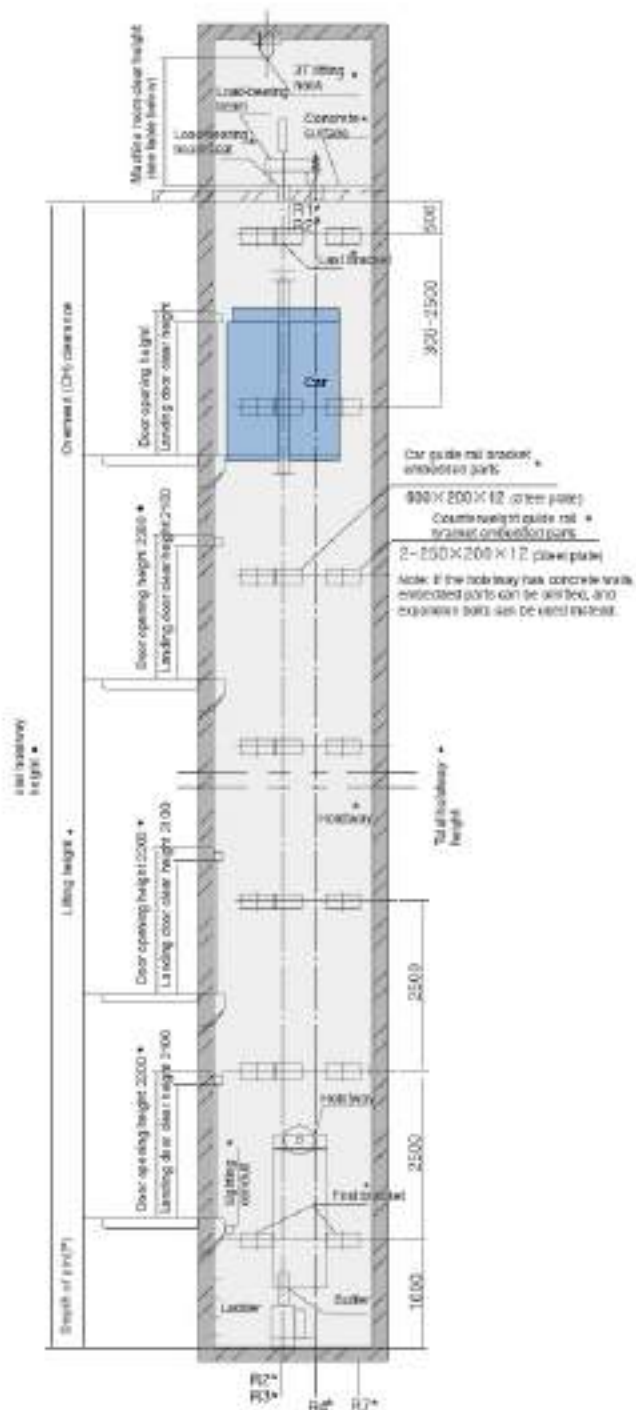
| Monitor function | |
|------------------------------|--|
| O Remote monitor | The lift long-distance monitor and control can be fulfilled through modem and telephone. It is convenient for the factories and service units to timely know the travel conditions of every lift and promptly take the corresponding measures. |
| O Remote control | The lift can have independent travel according to the specific requirements through operation monitor screen (optional). |
| O Camera function in the car | The camera is installed in the car to monitor the car conditions. |

| Safety function | |
|---|---|
| S Light curtains protection | In the door open and shut period, infrared light that covers the whole door height is used to probe the door protection device of both the passengers and objects. |
| S Designated stop | If the lift can not open the door in the destination floor out of some reason, the lift will close the door and travel to the next designated floor. |
| S Overload holding stop | When the car is overloaded, the buzzer rings and stops the lift in the same floor. |
| S Anti-stall limiter protection | The lift stops operation due to slippery function in the rope. |
| S Start protection control | If the lift does not leave door zone within the designated time after it gets started, it will stop the operation. |
| S Inspection operation | When the lift enters into inspection operation, the car travels at moving running. |
| S Fault self-diagnosis | The controller can record lift fault troubles so as to quickly remove the trouble and restore the lift operation. |
| S Repeated door closing | If the lift can not close the door due to certain obstacle or interference, the lift will reopen or re-shut the door until obstacles are eliminated. |
| S Up/down over-run and final limit protection | The device can effectively prevent from the lift surging to the top or tracking the bottom when it is out of control. It results in more safe and reliable lift travel. |
| S Down over-speed protection device | When the lift down 1.2 times higher than the rated speed, this device will automatically cut off control matrix, stop the motor running so as to stop lift down at over-speed. If the lift continues to down at over-speed, and the speed is 1.4 times higher than rated speed, safety rope will force the lift stop in order to ensure the safety. |
| S Upward over-speed protection device | When the lift up speed is 1.2 times higher than rated speed, the device will automatically decelerate or brake the lift. |
| S Elevator cab prevents accidental movement | When the elevator is in the open state, if there is accidental movement, the elevator cab can prevent the movement. |

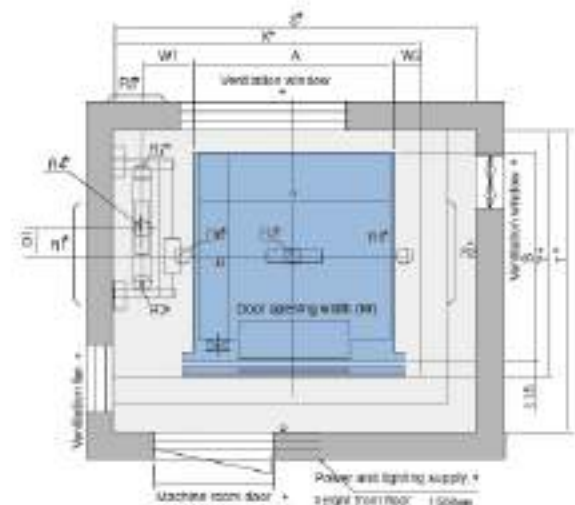
| Emergency function | |
|-------------------------------|---|
| S Emergency car lighting | Emergency car lighting automatically activated in case power failure. |
| S Trailing running | When the lift enters into emergency electric operation, the car travels at low speed holding running. |
| S Five-way intercom | Communication with car, car top, lift machine room, well pit and rescue duty room through audio cable. |
| S Bell | In emergency conditions, if bell button above car operation panel is continuously pressed, electric bell rings on top of the car. |
| S Fire emergency return | If you want key switch in main landing or monitor screen, all the callings will be cancelled. The lift directly and immediately drives to the designated rescue landing and automatically opens the door. |
| O Leveling when power failure | In normal power failure, the chargeable battery supplies the lift power. The lift drives to the nearest landing. |

| Energy-saving function | |
|---|--|
| S Cerventilation light automatic shut-off | If there is no calling or command signal within the operation time, the car fan and lighting will be automatically closed in order to save the energy. |
| S Base station shut-off | The lift can be called to main landing (after finishing the service) through the key switch and automatically exits the service. |
| O Water ion air conditioner/water ion fan | It can release high-concentration ion groups, efficiently decompose planktonic matter in the air, remove viruses and allergic substances floating in the air, and keep the air in the elevator car fresh and tidy all times. |
| O Intelligent UV sterilization system | When no one uses the elevator, the intelligent ultraviolet sterilization system can automatically activate the sterilization function according to the set time to realize all-round sterilization and disinfection of the elevator car. When someone initiates an outdoor call, the ultraviolet sterilization function is immediately turned off. |
| O Antibacterial button | The button is made of antibacterial metal, which destroys the cell membrane of bacteria through metal ions, so as to prevent the growth and reproduction of bacteria or eliminate bacteria. |

PASSENGER ELEVATOR COUNTERWEIGHT SIDE-PLACEMENT(MACHINE ROOM)



Layout for left-side counterweight (right-side is symmetrical)
(1450-1000kg 60-100rev/min)



Layout for left-side counterweight (right-side is symmetrical)
(800-1000kg 120-140rev/min 1150-1600kg 60-100rev/min)

Note 1: Items marked with ** are to be provided or ensured by the client.
Note 2: For technical details (hoistway, landing door openings, machine room/Embedded Steel), contact GOST Elevator Co., Ltd.
Note 3: Dimensions in mm.

| Specifications | Machine room clear height (mm) |
|----------------------|--------------------------------|
| 450-1050kg 1~1.75m/s | 2200 |
| 1150kg 1~1.75m/s | 2500 |
| 800-1050kg 2~2.5m/s | 2500 |
| 1350-1600kg 2~2.5m/s | 2500 |

| Rated load (kg) | Rated speed (m/s) | Machine room hook capacity |
|-----------------|-------------------|----------------------------|
| 450-1050 | 1/1.5/1.75 | 3 tons |
| 1150-1600 | 1/1.5/1.75 | 4 tons |
| 800-1050 | 2/2.5 | 4 tons |

| Rated load (kg) | Rated speed (m/s) | Overhead (OH) clearance (mm) | Pit (P) clearance (mm) |
|-----------------|-------------------|------------------------------|------------------------|
| 450 | 1 | 4400 | 1500 |
| | 1.5 | 4500 | 1600 |
| | 1.75 | 4600 | 1700 |
| 1600 | 2 | 4600 | 1700 |
| | 2.5 | 4700 | 1800 |

Note: Data is valid for a car height of 2500mm.

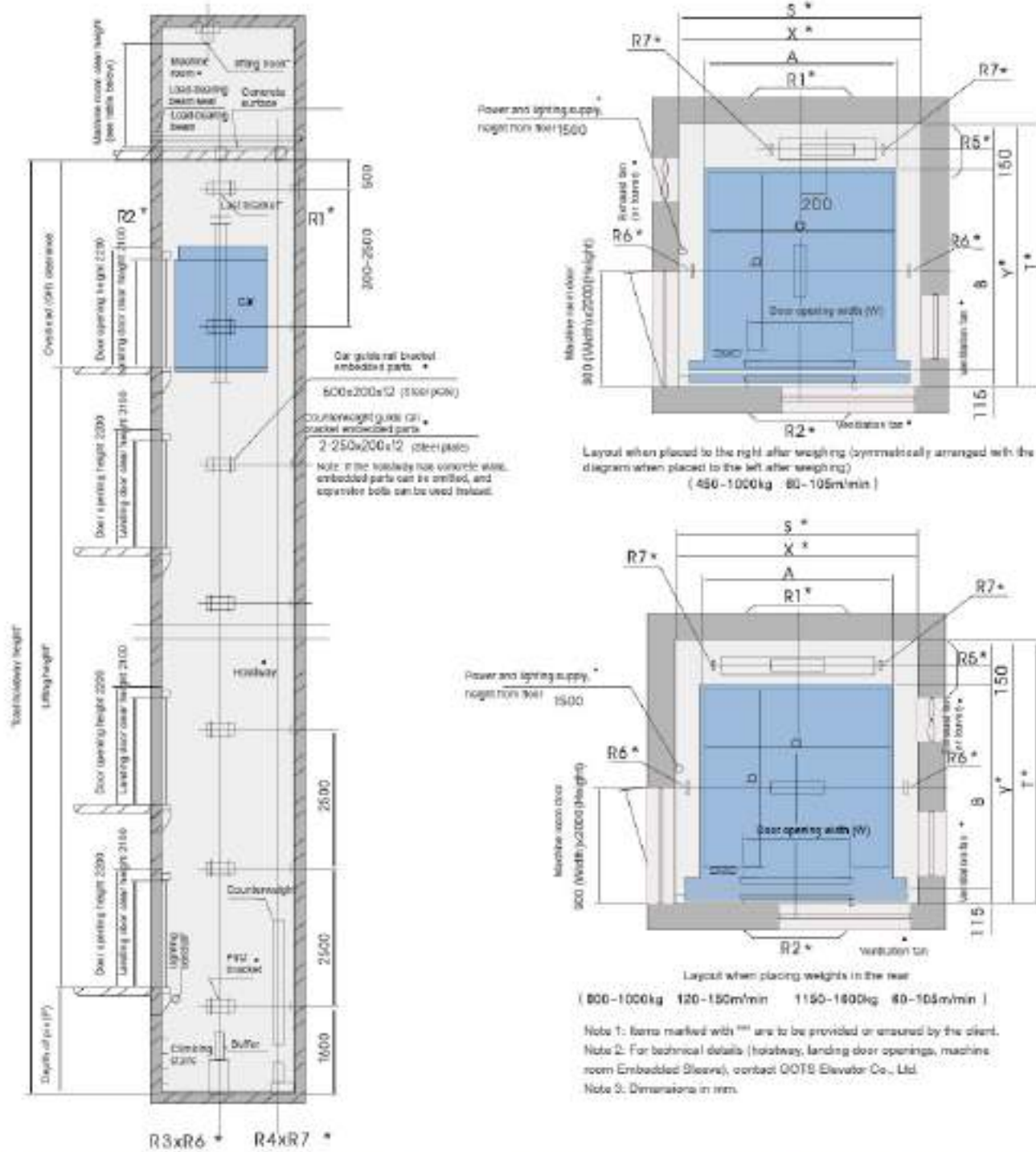
Technical parameters

| Load capacity (Kg) (number of passengers) | Speed (m/s) | Car dimensions (mm) | | Door dimensions (mm) | | Hoistway dimensions (mm) XxY | Machine room dimensions (mm) SxT | Machine room reaction force (N) | | | Pit reaction force (N) | | | |
|---|-------------|-------------------------|-------------------------|----------------------|--------------------|------------------------------|----------------------------------|---------------------------------|--------|-------|------------------------|--------|-------|-------|
| | | Internal dimensions axb | External dimensions axb | Type | Door opening width | | | R1 | R2 | R5 | R3 | R4 | R6 | R7 |
| 450 (5) | 1 | 1200X1000 | 1250X1065 | 2PCD | 700 | 2000X1900 | 2000X2000 | 37000 | 28000 | 19000 | 50000 | 45000 | 33000 | 3000 |
| | 1.75 | 1400X1000 | 1450X1065 | 2PCD | 800 | 2200X1900 | 2200X2000 | 50000 | 37000 | 25000 | 68000 | 55000 | 33000 | 3000 |
| 550 (7) | 1 | 1400X1100 | 1450X1266 | 2PCD | 800 | 2200X1700 | 2200X2000 | 50000 | 37000 | 25000 | 68000 | 55000 | 27400 | 3000 |
| | 1.75 | 1400X1100 | 1450X1266 | 2PCD | 800 | 2200X1700 | 2200X2000 | 48800 | 30200 | 30000 | 62000 | 69000 | 29000 | 6000 |
| 800 (10) | 1 | 1400X1350 | 1450X1515 | 2PCD | 800 | 2200X1900 | 2200X1900 | 62000 | 45000 | 25000 | 85000 | 63000 | 34000 | 3000 |
| | 1.5 | | | | | | | 59000 | 34800 | 30000 | 96000 | 72000 | 30000 | 6000 |
| | 1.75 | | | | | | | 110000 | 80000 | — | 200000 | 75000 | 37000 | 12000 |
| | 2 | | | | | | | — | — | — | — | — | — | — |
| 1050 (14) | 1 | 1600X1500 | 1650X1665 | 2PCD | 900 | 2400X1950 | 2400X1950 | 72000 | 51000 | 31000 | 100000 | 80000 | 37500 | 3000 |
| | 1.5 | | | | | | | 64700 | 38000 | 30000 | 102000 | 82000 | 34000 | 5000 |
| | 1.75 | | | | | | | 120000 | 88000 | — | 110000 | 180000 | 75000 | 12000 |
| 1150 (15) | 1 | 1700X1500 | 1750X1665 | 2PCD | 1000 | 2600X1900 | 2600X1900 | 85000 | 61000 | 37000 | 120000 | 98000 | 50000 | 11000 |
| | 1.5 | | | | | | | 125000 | 85000 | — | 210000 | 160000 | 75000 | 13000 |
| | 1.75 | | | | | | | 130000 | 87000 | — | 220000 | 160000 | 80000 | 16000 |
| | 2 | | | | | | | — | — | — | — | — | — | — |
| 1350 (18) | 1 | 2000X1500 | 2050X1665 | 2PCD | 1100 | 2900X1950 | 2900X1950 | 101000 | 71000 | 43000 | 140000 | 112000 | 66000 | 11000 |
| | 1.5 | | | | | | | 135000 | 90000 | — | 230000 | 200000 | 75000 | 15000 |
| | 1.75 | | | | | | | 140000 | 95000 | — | 240000 | 210000 | 90000 | 16000 |
| | 2 | | | | | | | — | — | — | — | — | — | — |
| 1600 (21) | 1 | 2000X1700 | 2050X1665 | 2PCD | 1100 | 2900X2100 | 2900X2100 | 115000 | 82000 | 50000 | 150000 | 128000 | 70000 | 11000 |
| | 1.5 | | | | | | | 140000 | 95000 | — | 240000 | 210000 | 80000 | 15000 |
| | 1.75 | | | | | | | 140000 | 95000 | — | 240000 | 210000 | 80000 | 15000 |
| | 2 | | | | | | | 140000 | 100000 | — | 250000 | 220000 | 85000 | 15000 |

| Speed | 1m/s | 1.5m/s | 1.75m/s | 2m/s | 2.5m/s |
|---|------|--------|---------|------|--------|
| Maximum number of stops | 16 | 32 | 32 | 48 | 48 |
| Maximum lifting height (m) | 60 | 100 | 100 | 140 | 140 |
| Maximum lifting height with firefighter operation (m) | 58 | 86 | 99.5 | 115 | 140 |
| Minimum floor height (mm) | 2800 | 2800 | 2800 | 2800 | 2800 |

Note 1: Custom non-standard designs are available for special hoistways. Contact sales or technical staff for solutions.
Passenger elevator model: TKJ
Note 2: For through core or speeds >1.75m/s, internal dimensions may differ from the table.

PASSENGER ELEVATOR COUNTERWEIGHT REAR-PLACEMENT (MACHINE ROOM)



| Specifications | Machine room clear height (mm) |
|----------------------|--------------------------------|
| 450-1050kg 1-1.75m/s | 2200 |
| 1150kg 1-1.75m/s | 2500 |
| 800-1050kg 2-2.5m/s | 2500 |
| 1350-1600kg 2-2.5m/s | 2500 |

| Rated load (kg) | Rated speed (m/s) | Machine room hook capacity |
|-----------------|-------------------|----------------------------|
| 450-1050 | 1/1.5/1.75 | 3 tons |
| 1150-1800 | 1/1.5/1.75 | 4 tons |
| 800-1050 | 2/2.5 | 4 tons |

| Rated load (kg) | Rated speed (m/s) | Overhead (OH) clearance (mm) | Pit (P) clearance (mm) |
|-----------------|-------------------|------------------------------|------------------------|
| 450 | 1 | 4400 | 1500 |
| | 1.5 | 4500 | 1600 |
| | 1.75 | 4600 | 1700 |
| 1600 | 2 | 4600 | 1700 |
| | 2.5 | 4700 | 1800 |

Note: Data is valid for a car height of 2533mm.

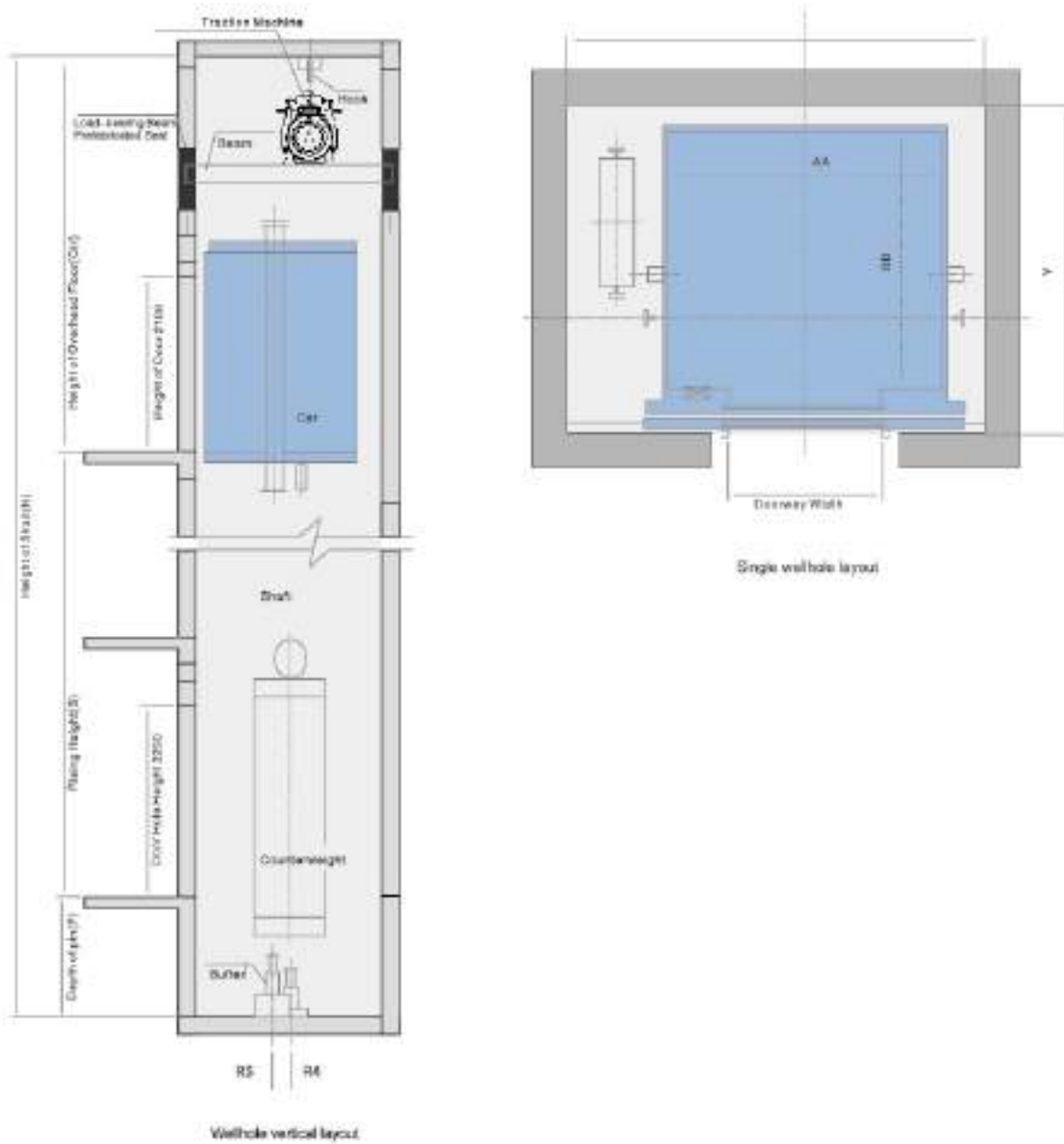
Technical parameters

| Load capacity (Kg) / rated speed (m/s) | Car dimensions (mm) | Door size (mm) | | Hoistway dimensions (mm) | Machine room dimensions (mm) | Machine room reaction force (N) | | | Pit reaction force (N) | | | | | | | | | | | |
|--|---------------------|--------------------------|--------------------------|--------------------------|------------------------------|---------------------------------|--------------------|--------|------------------------|--------|--------|-------|-------|--------|--------|-------|--------|--------|-------|-------|
| | | Internal dimensions axxb | External dimensions axxb | | | Type | Door opening width | X x Y | S x T | R1 | R2 | R5 | R3 | R4 | R6 | R7 | | | | |
| 450 (6) | 1200x1000 | 1250x1165 | 2PCO | 700 | 1700x1650 | 2000x2000 | 37000 | 28000 | 19000 | 50000 | 45000 | 33000 | 3000 | | | | | | | |
| | | | | | | | | | | | | | | | | | | | | |
| 520 (7) | 1400x1000 | 1450x1165 | 2PCO | 800 | 1900x1650 | 1900x2000 | 50000 | 37000 | 25000 | 68000 | 58000 | 33000 | 3000 | | | | | | | |
| | | | | | | | | | | | | | | 33000 | 23000 | 25800 | 71800 | 60000 | 53000 | 5000 |
| | | | | | | | | | | | | | | | | | | | | |
| 630 (8) | 1400x1100 | 1450x1265 | 2PCO | 800 | 1900x1800 | 1900x2200 | 50000 | 37000 | 25000 | 68000 | 55000 | 27400 | 3000 | | | | | | | |
| | | | | | | | | | | | | | | 36800 | 23500 | 25000 | 65600 | 53000 | 31900 | 5000 |
| 800 (10) | 1400x1350 | 1450x1515 | 2PCO | 900 | 2000x2050 | 1900x2350 | 63000 | 46000 | 29000 | 85000 | 69000 | 34000 | 3000 | | | | | | | |
| | | | | | | | | | | | | | | 42200 | 25000 | 25000 | 109000 | 92500 | 41000 | 5000 |
| | | | | | | | | | | | | | | | | | | | | |
| | | | | | | | | | | | | | | 11000 | 80000 | — | 200000 | 150000 | 70000 | 17000 |
| 1050 (14) | 1800x1500 | 1850x1665 | 2PCO | 900 | 2100x2200 | 2100x2200 | 48000 | 29000 | 25000 | 123400 | 102400 | 44700 | 5000 | | | | | | | |
| | | | | | | | | | | | | | | 72000 | 51000 | 31000 | 100000 | 80000 | 37500 | 3000 |
| | | | | | | | | | | | | | | | | | | | | |
| | | | | | | | | | | | | | | 115000 | 65000 | — | 210000 | 180000 | 75000 | 12000 |
| 1150 (15) | 1700x1500 | 1750x1665 | 2PCO | 1000 | 2200x2200 | 2200x2200 | 60000 | 41000 | 37000 | 123000 | 96000 | 60000 | 11000 | | | | | | | |
| | | | | | | | | | | | | | | 100000 | 60000 | — | 210000 | 160000 | 70000 | 13000 |
| | | | | | | | | | | | | | | | | | | | | |
| | | | | | | | | | | | | | | 125000 | 60000 | — | 220000 | 180000 | 60000 | 19000 |
| 1350 (18) | 2000x1500 | 2050x1665 | 2PCO | 1100 | 2500x2250 | 2500x2250 | 130000 | 95000 | — | 230000 | 200000 | 75000 | 15000 | | | | | | | |
| | | | | | | | | | | | | | | 101000 | 71000 | 43000 | 14000 | 112000 | 85000 | 11000 |
| | | | | | | | | | | | | | | | | | | | | |
| | | | | | | | | | | | | | | 135000 | 10000 | — | 240000 | 210000 | 90000 | 16000 |
| 1600 (21) | 2000x1700 | 2050x1865 | 2PCO | 1100 | 2500x2450 | 2500x2450 | 155000 | 100000 | — | 240000 | 210000 | 80000 | 15000 | | | | | | | |
| | | | | | | | | | | | | | | 115000 | 60000 | 50000 | 160000 | 128000 | 70000 | 11000 |
| | | | | | | | | | | | | | | | | | | | | |
| | | | | | | | | | | | | | | 145000 | 100000 | — | 250000 | 220000 | 95000 | 16000 |

| Speed | 1m/s | 1.5m/s | 1.75m/s | 2m/s | 2.5m/s |
|---|------|--------|---------|------|--------|
| Maximum number of stops | 16 | 32 | 32 | 48 | 48 |
| Maximum lifting height (m) | 60 | 100 | 100 | 140 | 140 |
| Maximum lifting height with firefighter operation (m) | 58 | 86 | 99.5 | 115 | 140 |
| Minimum floor height (mm) | 2800 | 2800 | 2900 | 2800 | 2900 |

Note 1: Custom non-standard designs are available for special hoistways. Contact sales or technical staff for solutions. Passenger elevator model: THJ.

PASSENGER ELEVATOR COUNTERWEIGHT SIDE PLACEMENT (MACHINE ROOMLESS)



Technical parameters

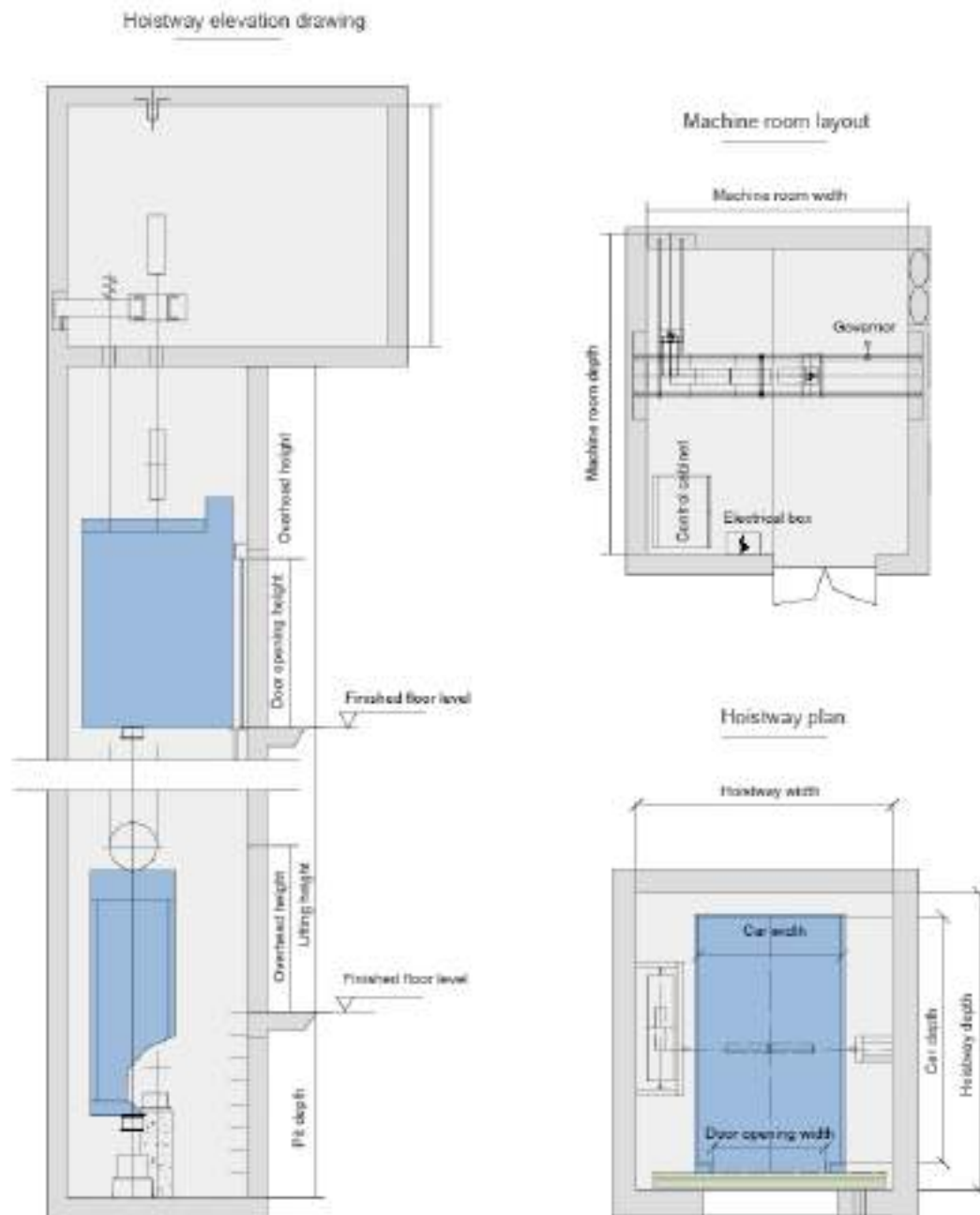
| Model | Load (kg/2000lb) | Speed (m/s) | Car Dimensions AA*BB (mm) | Doorway Width (mm) | Shaft X*Y (mm) | Height Overhead Floor (mm) | Depth of pit (P) (mm) | Main stress points 1KN | | | | |
|--------------------------------|------------------|-------------|---------------------------|--------------------|----------------|----------------------------|-----------------------|------------------------|----|-----|-----|----|
| | | | | | | | | R1 | R2 | R3 | R4 | R5 |
| TKU-830-C080 TKU-830-C080 | 830/8 | 1 1.5 | 1400x1100 | 800 | 2300x1850 | >4500 | >1800 | 50 | 37 | 68 | 55 | 25 |
| TKU-800-C080 TKU-800-C080 | 800/8 | 1 1.5 | 1400x1200 | 800 | 2250x1800 | >4500 | >1800 | 63 | 48 | 85 | 69 | 29 |
| TKU-1050-C080 TKU-1050-C080 | 1050/14 | 1 1.5 | 1800x1500 | 900 | 2500x1900 | >4500 | >1900 | 72 | 51 | 100 | 80 | 31 |
| TKU-1130-C080 TKU-1130-C080 | 1130/18 | 1 1.5 | 1700x1500 | 1000 | 2800x1950 | >4550 | >1900 | 88 | 61 | 120 | 96 | 37 |
| TKU-1350-C080 TKU-1350-C080 | 1350/18 | 1 1.5 | 2000x1500 | 1100 | 2800x2050 | >4600 | >1900 | 101 | 71 | 140 | 112 | 43 |
| TKU-1800-C080 TKU-1800-C080 | 1800/21 | 1 1.5 | 2000x1700 | 1100 | 2900x2200 | >4600 | >1900 | 115 | 84 | 160 | 128 | 50 |

Technical parameters

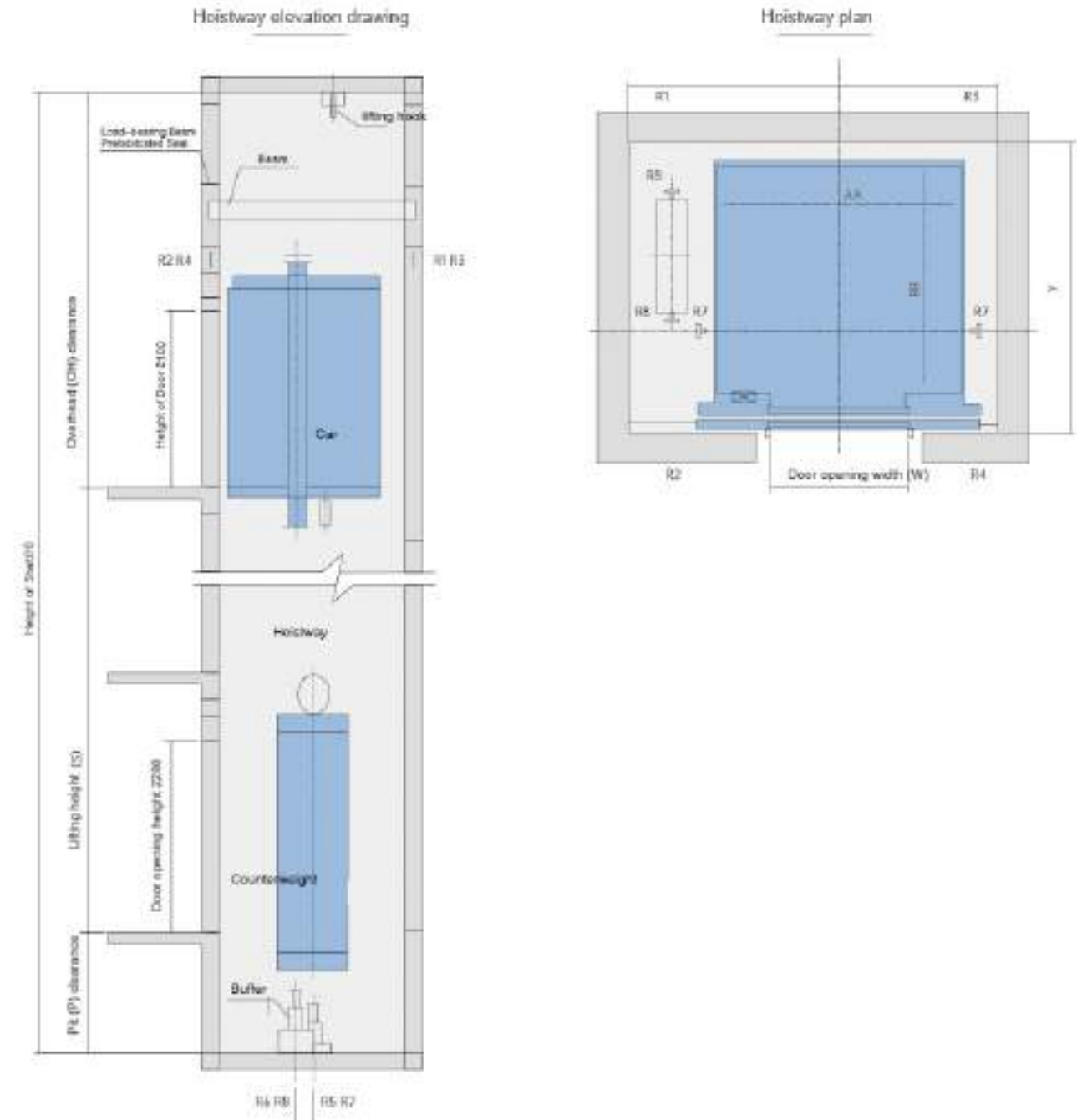
| No. | Load capacity & speed (passengers/P) Kg-m/s | Power supply voltage | Machine room circuit breaker Rated current (A) | | Machine room transformer capacity (kVA) | | Main power cable specification (mm ²) | | Ground wire specification (mm ²) | | Hoistway ventilation (per unit) | | |
|----------------|--|----------------------|--|-----------|---|-----------|---|-----------|--|-----------|--|---------------------------------------|----------------|
| | | | Single unit | Two units | Single unit | Two units | Single unit | Two units | Single unit | Two units | Heat dissipation [J · 10 ³ h] | ventilation volume [m ³ h] | Passes (Gross) |
| 1 | 450 (6)-1 | 380V 1φ | 20 | 30 | 5 | 10 | 6 | 8 | 6 | 8 | 2.83 | 330 | 200 |
| | 450 (6)-1.5 | | 20 | 30 | 6.3 | 10 | 6 | 8 | 6 | 10 | 3.46 | 400 | 200 |
| 2 | 550 (7)-1.5 | | 30 | 40 | 8 | 12.5 | 8 | 16 | 8 | 16 | 5.19 | 590 | 250 |
| | 550 (7)-1.75 | | 30 | 50 | 10 | 16 | 8 | 16 | 8 | 16 | 6.05 | 690 | 250 |
| 3 | 630 (8)-1 | | 20 | 30 | 5 | 10 | 6 | 8 | 6 | 8 | 4 | 459.9 | 200 |
| | 630 (8)-1.5 | | 30 | 40 | 8 | 12.5 | 8 | 16 | 8 | 16 | 5.9 | 684.9 | 250 |
| 3 | 630 (8)-1.75 | | 30 | 50 | 8 | 16 | 8 | 16 | 8 | 16 | 6.9 | 797.4 | 250 |
| | 4 | | 800 (10)-1 | 20 | 40 | 6.3 | 12.5 | 8 | 10 | 8 | 10 | 5.2 | 599.2 |
| 800 (10)-1.5 | | | 20 | 50 | 10 | 16 | 8 | 16 | 8 | 16 | 7.8 | 893.8 | 250 |
| 800 (10)-1.75 | | | 40 | 50 | 10 | 20 | 10 | 25 | 10 | 16 | 9.1 | 1041.8 | 300 |
| 800 (10)-2 | | | 40 | 50 | 12.5 | 25 | 16 | 25 | 16 | 16 | 10.37 | 1188.47 | 300 |
| 4 | 800 (10)-2.5 | | 50 | 60 | 16 | 31.5 | 25 | 30 | 16 | 16 | 12.96 | 1493.11 | 300 |
| | 5 | | 1050 (14)-1 | 30 | 40 | 8 | 12.5 | 8 | 16 | 8 | 16 | 6.6 | 759.9 |
| 1050 (14)-1.5 | | | 40 | 60 | 13 | 20 | 10 | 25 | 10 | 16 | 9.9 | 1134.9 | 300 |
| 1050 (14)-1.75 | | | 40 | 60 | 13 | 25 | 16 | 25 | 16 | 16 | 11.5 | 1322.4 | 300 |
| 1050 (14)-2 | | | 50 | 60 | 16 | 31.5 | 25 | 30 | 16 | 16 | 13.2 | 1509.9 | 300 |
| 5 | 1050 (14)-2.5 | 60 | 75 | 20 | 40 | 25 | 35 | 16 | 16 | 16.5 | 1884.9 | 350 | |
| | 6 | 1130 (15)-1 | 40 | 40 | 10 | 16 | 10 | 25 | 10 | 16 | 7.23 | 831.33 | 250 |
| 1130 (15)-1.5 | | 40 | 50 | 16 | 25 | 16 | 25 | 16 | 16 | 10.84 | 1242.04 | 300 | |
| 1130 (15)-1.75 | | 50 | 60 | 16 | 25 | 25 | 30 | 16 | 16 | 12.65 | 1447.4 | 300 | |
| 1130 (15)-2 | | 50 | 75 | 20 | 31.5 | 25 | 30 | 16 | 16 | 14.45 | 1652.76 | 300 | |
| 6 | 1130 (15)-2.5 | 60 | 100 | 25 | 40 | 25 | 35 | 16 | 16 | 18.07 | 2063.47 | 350 | |
| | 7 | 1350 (18)-1 | 40 | 40 | 12.5 | 20 | 10 | 25 | 10 | 16 | 8.49 | 974.19 | 300 |
| 1350 (18)-1.5 | | 50 | 60 | 16 | 25 | 25 | 30 | 16 | 16 | 12.73 | 1456.33 | 300 | |
| 1350 (18)-1.75 | | 50 | 75 | 20 | 31.5 | 25 | 30 | 16 | 16 | 14.85 | 1697.4 | 300 | |
| 1350 (18)-2 | | 60 | 75 | 20 | 40 | 25 | 35 | 16 | 16 | 16.97 | 1938.47 | 350 | |
| 7 | 1350 (18)-2.5 | 75 | 100 | 25 | 40 | 30 | 50 | 16 | 25 | 21.2 | 2420.6 | 350 | |
| | 8 | 1600 (21)-1 | 40 | 50 | 12.5 | 25 | 16 | 25 | 16 | 16 | 10.1 | 1152.8 | 300 |
| 1600 (21)-1.5 | | 50 | 75 | 20 | 31.5 | 25 | 35 | 16 | 16 | 15.1 | 1724.4 | 300 | |
| 1600 (21)-1.75 | | 60 | 100 | 20 | 40 | 25 | 35 | 16 | 16 | 17.6 | 2009.9 | 350 | |
| 1600 (21)-2 | | 75 | 100 | 25 | 40 | 30 | 50 | 16 | 25 | 20.1 | 2295.6 | 350 | |
| 8 | 1600 (21)-2.5 | 100 | 125 | 31.5 | 50 | 30 | 60 | 16 | 30 | 25.13 | 2867.04 | 400 | |

Note 1: The main power cable specification is suitable for lengths 4150m. For longer cables, recalculate: Cable size (mm²) = Actual length/150 * table value.
 Note 2: Ventilation calculations assume ambient temperature 34°C. For higher temperatures, install cooling devices.

MACHINE ROOM HOSPITAL ELEVATOR CONSTRUCTION SKETCH



MACHINE ROOM-LESS HOSPITAL ELEVATOR CONSTRUCTION SKETCH



Technical parameters

| Load capacity (KG) | Speed (m/s) | Number of passengers | Car dimensions (mm) | Door opening dimensions (mm) | Door operation type | Standard hoistway dimensions (mm) | Standard machine room dimensions (mm) | Minimum overhead height (mm) | Minimum pit depth (mm) |
|--------------------|-------------|----------------------|------------------------|------------------------------|---------------------|-----------------------------------|---------------------------------------|------------------------------|------------------------|
| | | | Width × Depth × Height | Width × Depth | | Width × Depth | Width × Depth × Height | | |
| 1050 | 1.0-1.75 | 14 | 1200 × 2000 × 2500 | 900 × 2100 | Center opening | 2200 × 2500 | 2200 × 2500 × 2500 | 4500 | 1600 |
| 1600 | 1.0-1.75 | 21 | 1400 × 2400 × 2500 | 1100 × 2100 | Center opening | 2500 × 2800 | 2500 × 2800 × 2500 | 4500 | 1600 |
| 2000 | 1.0-1.75 | 26 | 1500 × 2700 × 2500 | 1200 × 2100 | Center opening | 2600 × 2700 | 2600 × 3150 × 2500 | 4650 | 1600 |

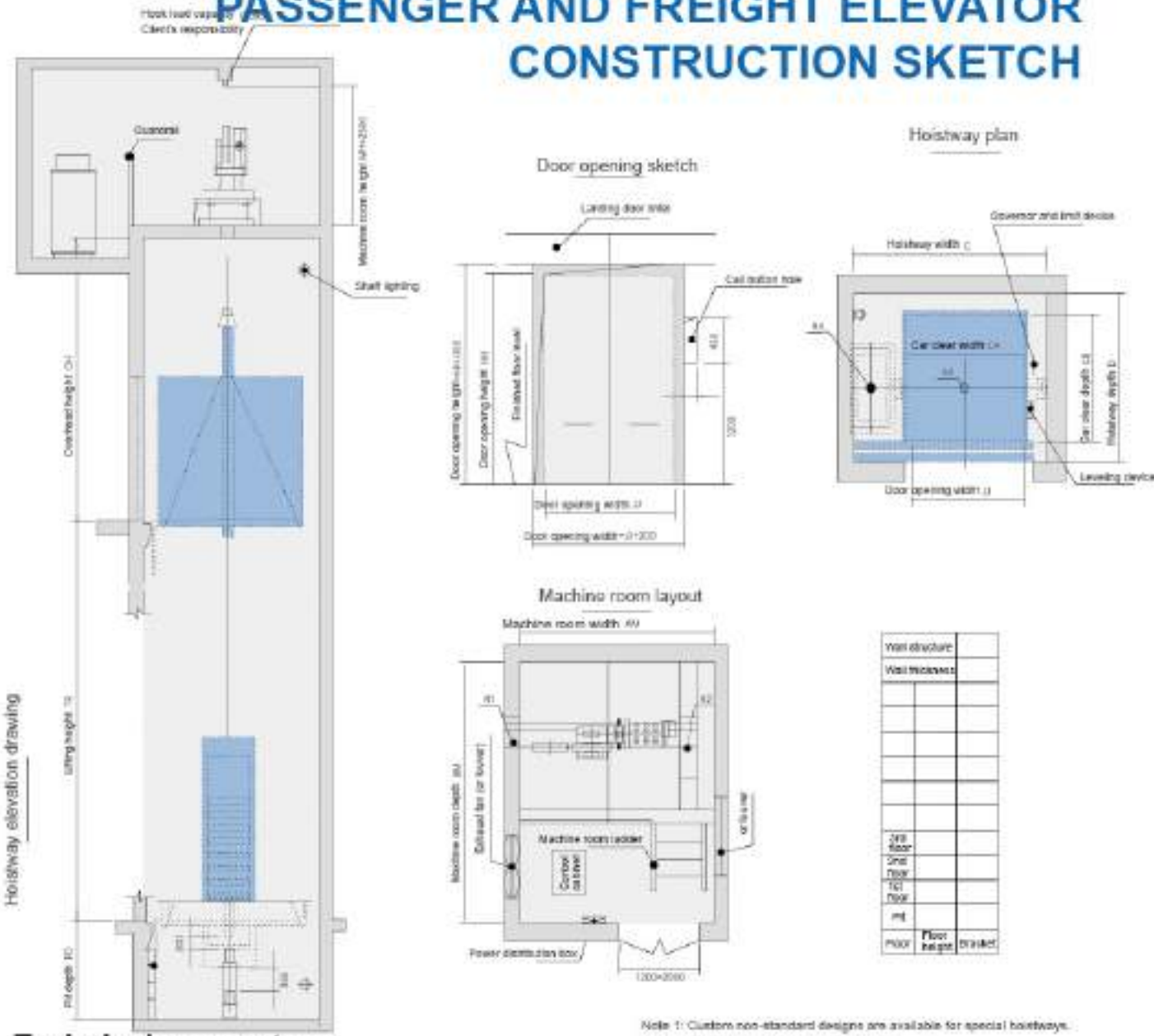
Note 1: Custom non-standard designs are available for special hoistways. Contact sales or technical staff for solutions.
 Note 2: For through cars or speeds >1.75m/s, internal dimensions may differ from the table.

Technical parameters

| Load capacity (KG) | Speed (m/s) | Number of passengers | Car dimensions (mm) | Door opening dimensions (mm) | Door operation type | Standard hoistway dimensions (mm) | Minimum overhead height (mm) | Minimum pit depth (mm) |
|--------------------|-------------|----------------------|------------------------|------------------------------|---------------------|-----------------------------------|------------------------------|------------------------|
| | | | Width × Depth × Height | Width × Depth | | Width × Depth | | |
| 1050 | 1.0-1.75 | 14 | 1200 × 2000 × 2400 | 900 × 2100 | Center opening | 2250 × 2400 | 4500 | 1600 |
| 1600 | 1.0-1.75 | 21 | 1400 × 2400 × 2400 | 1100 × 2100 | Center opening | 2550 × 2800 | 4500 | 1500 |
| 2000 | 1.0-1.75 | 26 | 1500 × 2700 × 2400 | 1200 × 2100 | Center opening | 2700 × 3150 | 4800 | 1600 |

Note 1: Custom non-standard designs are available for special hoistways. Contact sales or technical staff for solutions.
 Note 2: For through cars or speeds >1.75m/s, internal dimensions may differ from the table.

PASSENGER AND FREIGHT ELEVATOR CONSTRUCTION SKETCH



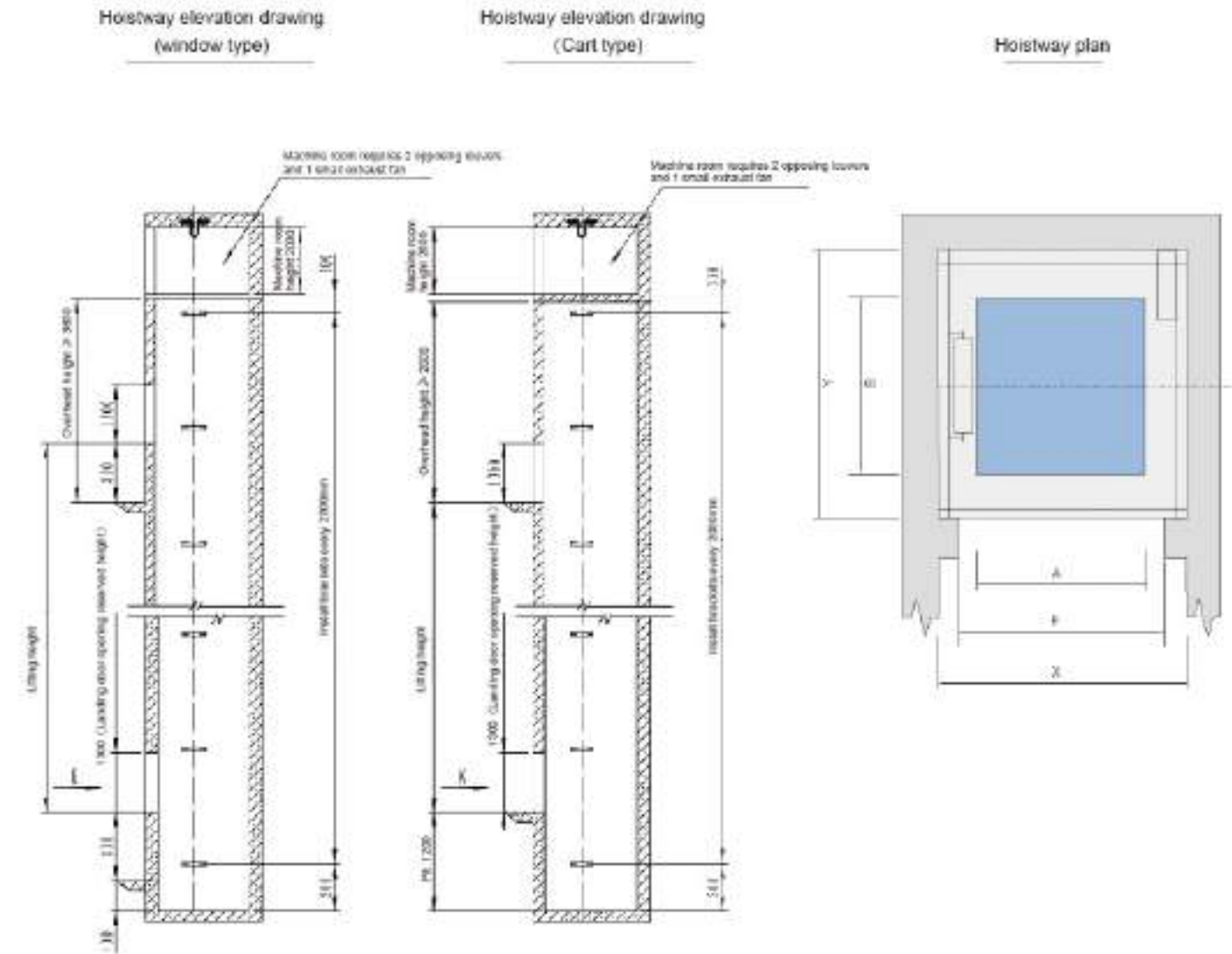
Technical parameters

| Mode | Rated load kg | Car dimensions mm Width*Depth*Height | Speed m/s | Door opening dimensions mm | Hoistway dimensions mm Width*Depth | Overhead height mm | Pit depth mm |
|------------------|---------------|--------------------------------------|-----------|----------------------------|------------------------------------|--------------------|--------------|
| THJ2000/0.5-JXP | 2000 | 1900x2150x2400 | 0.5 | 1800x2200 | 2850x2650 | ≥4500 | ≥1800 |
| THJ2000/0.5-JDP | 2000 | 1900x2150x2400 | 0.5 | 1800x2200 | 2900x2650 | ≥4500 | ≥1800 |
| THJ3000/0.5-JXP | 3000 | 2100x2700x2400 | 0.5 | 1800x2200 | 3200x3200 | ≥4500 | ≥1800 |
| THJ3000/0.5-JDP | 3000 | 2100x2700x2400 | 0.5 | 1800x2200 | 3250x3200 | ≥4500 | ≥1800 |
| THJ5000/0.5-JXP | 5000 | 2400x3600x2400 | 0.5 | 2200x2200 | 3900x4150 | ≥4800 | ≥1700 |
| THJ8000/0.5-JXP | 8000 | 2900x5900x2500 | 0.5 | 2400x2400 | 4150x6000 | ≥4800 | ≥1900 |
| THJ10000/0.5-JXP | 10000 | 2500x6750x2500 | 0.5 | 2500x2400 | 4250x7250 | ≥4800 | ≥1900 |

| Model | Door operation type | Traction ratio | Machine room dimensions mm Width*Depth*Height | Lifting height m | Motor power kw | Main stress points | | | | | |
|------------------|--------------------------|----------------|---|------------------|----------------|--------------------|-----|-----|-----|-----|-----|
| | | | | | | R1 | R2 | R3 | R4 | R5 | R6 |
| THJ2000/0.5-JXP | Side-opening double-fold | 4:1 | 2850x2650x2500 | 80 | 11 | 75 | 85 | 170 | 120 | 23 | / |
| THJ2000/0.5-JDP | Split in half | 4:1 | 2900x2650x2500 | 80 | 11 | 75 | 85 | 170 | 120 | 23 | / |
| THJ3000/0.5-JXP | Side-opening double-fold | 4:1 | 3200x3200x2500 | 80 | 15 | 80 | 100 | 190 | 155 | 30 | / |
| THJ3000/0.5-JDP | Split in half | 4:1 | 3250x3200x2500 | 80 | 15 | 80 | 100 | 190 | 155 | 30 | / |
| THJ5000/0.5-JXP | Split in half | 4:1 | 3900x4150x2800 | 60 | 25 | 200 | 150 | 150 | 155 | 30 | / |
| THJ8000/0.5-JDP | Split in half | 4:1 | 4150x6000x2800 | 30 | 40 | 65 | 135 | 215 | 245 | 103 | 112 |
| THJ10000/0.5-JDP | Split in half | 4:1 | 4250x7250x2800 | 30 | 50 | 66 | 145 | 225 | 255 | 113 | 122 |

Note 1: Custom non-standard designs are available for special hoistways. Contact sales or technical staff for solutions.

DUMBWAITER ELEVATOR CONSTRUCTION SKETCH

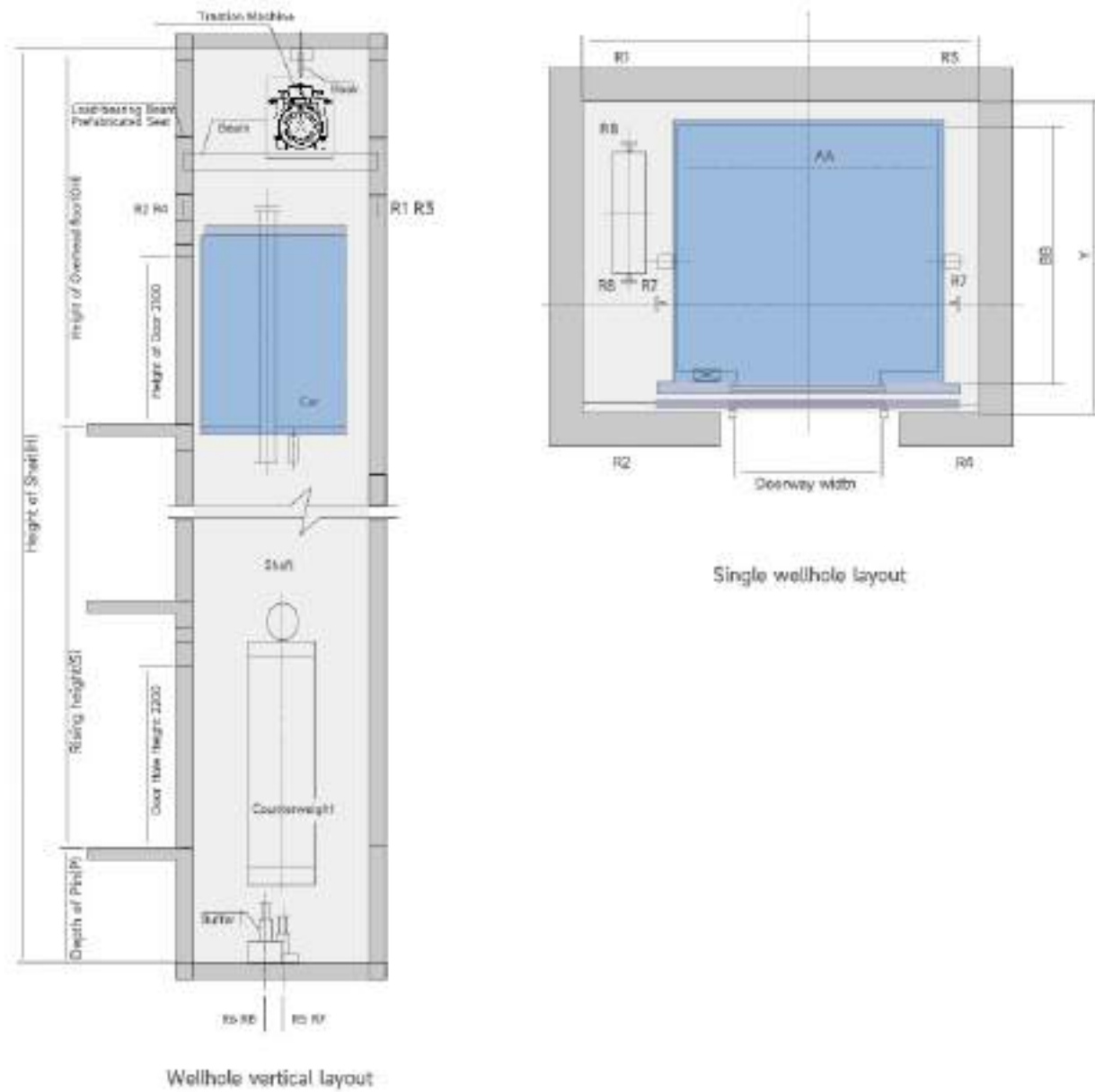


Technical parameters

| Load capacity (kg) | Speed (m/s) | Car dimensions (mm) (AxBxH) | Hoistway dimensions (XxY) | Door opening dimensions/type (opxh) | Machine room dimensions (mm) | Overhead height (mm) | Pit (mm) |
|--------------------|-------------|-----------------------------|---------------------------|-------------------------------------|------------------------------|----------------------|----------|
| 100 | 0.25 | 700x700x1200 | 1450x1000 | 700x1200/ The door is fully opening | 1450x1000x2000 | 3600 | 1200 |
| 200 | | 800x800x1200 | 1550x1100 | 800x1200/ The door is fully opening | 1550x1000x2000 | 3600 | |
| 250 | | 1000x1000x1200 | 1700x1400 | 800x1200/ The door is fully opening | 1700x1400x2000 | 2800 | |

注: F=A+200

VILLA ELEVATOR COUNTERWEIGHT SIDE-PLACEMENT (MACHINE ROOMLESS)

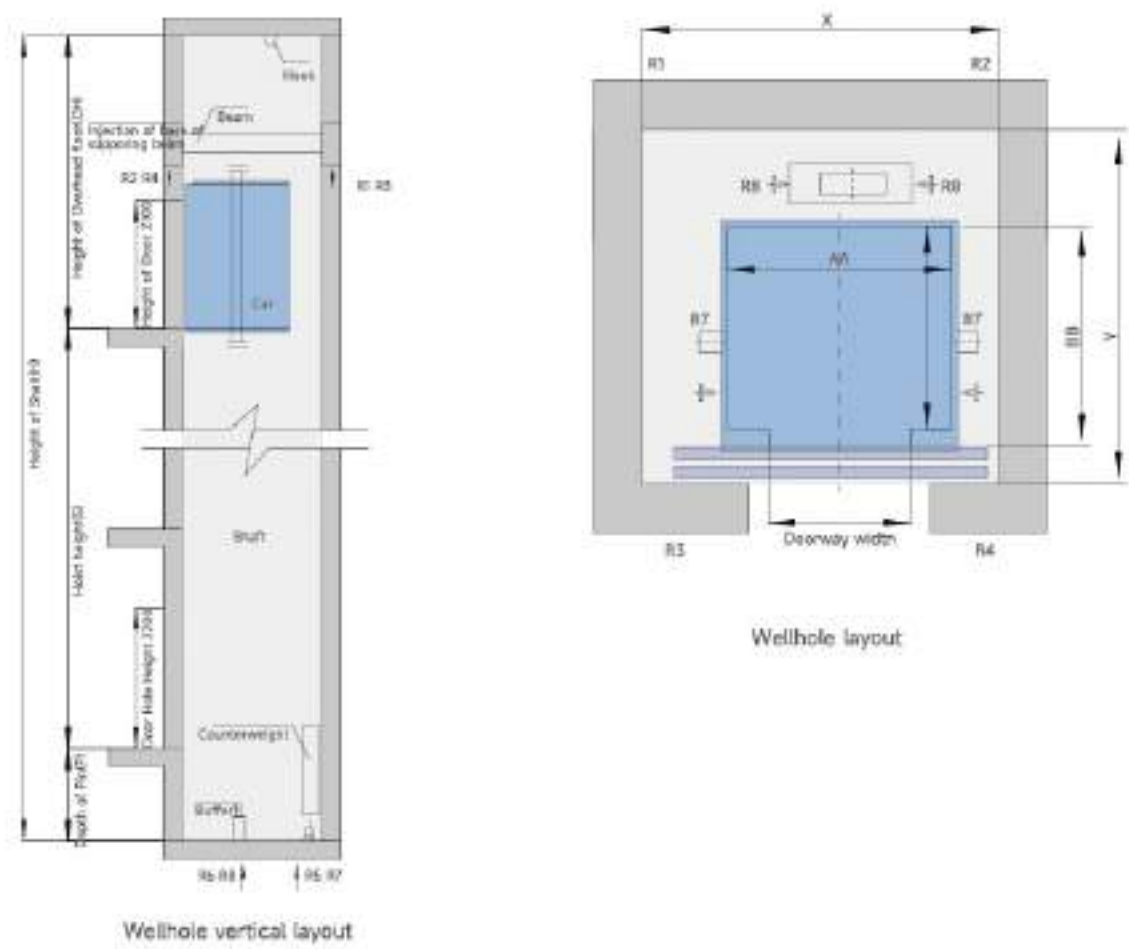


| Load (kg/People) | Speed (m/s) | Car Dimensions AA*BB (mm) | Doorway Width (mm) | Shaft X*Y (mm) | Machine Room Bearing Capacity (N) | | | | Pit Bearing Capacity (N) | | | |
|------------------|-------------|---------------------------|--------------------|----------------|-----------------------------------|-------|-------|-------|--------------------------|-------|-------|------|
| | | | | | R1 | R2 | R3 | R4 | R5 | R6 | R7 | R8 |
| 320/4 | 0.4 | 1050x1130x2200 | 700x2000 | 1680x1400 | 32000 | 18000 | 19900 | 53000 | 47500 | 33000 | 25000 | 5000 |
| | 0.4 | | | | 30000 | 18000 | 19000 | 50000 | 47000 | 32000 | 25000 | 5000 |
| 400/5 | 0.4 | 1150x1180x2200 | 700x2000 | 1750x1450 | 30000 | 18000 | 19000 | 50000 | 47000 | 32000 | 25000 | 5000 |
| | 0.4 | | | | 30000 | 18000 | 19000 | 50000 | 47000 | 32000 | 25000 | 5000 |

| Load (kg) | Speed (m/s) | Height of Overhead Floor (mm) (OH) | Depth of Pit (P) (mm) | Max. Rising Height (m) | Max. Number of Floor Stops |
|-----------|-------------|------------------------------------|-----------------------|------------------------|----------------------------|
| 320-400 | 0.4 | 3300 | 300 | 12 | 5 |
| | 0.4 | 3300 | 300 | 12 | 5 |

Note 1: The main power cable specification is suitable for lengths $S \le 150m$. For longer cables, recalculate: Cable size (mm²) = Actual length/150 * table value.

VILLA ELEVATOR COUNTERWEIGHT REAR-PLACEMENT



| Load (kg/People) | Speed (m/s) | Car Dimensions AA*BB (mm) | Doorway Width (mm) | Shaft X*Y (mm) | Machine Room Bearing Capacity (N) | | | | Pit Bearing Capacity (N) | | | |
|------------------|-------------|---------------------------|--------------------|----------------|-----------------------------------|-------|-------|-------|--------------------------|-------|-------|------|
| | | | | | R1 | R2 | R3 | R4 | R5 | R6 | R7 | R8 |
| 320/4 | 0.4 | 1050x1130x2200 | 650x2000 | 1500x1600 | 32000 | 18000 | 19900 | 53000 | 47500 | 33000 | 25000 | 5000 |
| | 0.4 | | | | 30000 | 18000 | 19000 | 50000 | 47000 | 32000 | 25000 | 5000 |
| 400/5 | 0.4 | 1150x1180x2200 | 700x2000 | 1600x1650 | 30000 | 18000 | 19000 | 50000 | 47000 | 32000 | 25000 | 5000 |
| | 0.4 | | | | 30000 | 18000 | 19000 | 50000 | 47000 | 32000 | 25000 | 5000 |

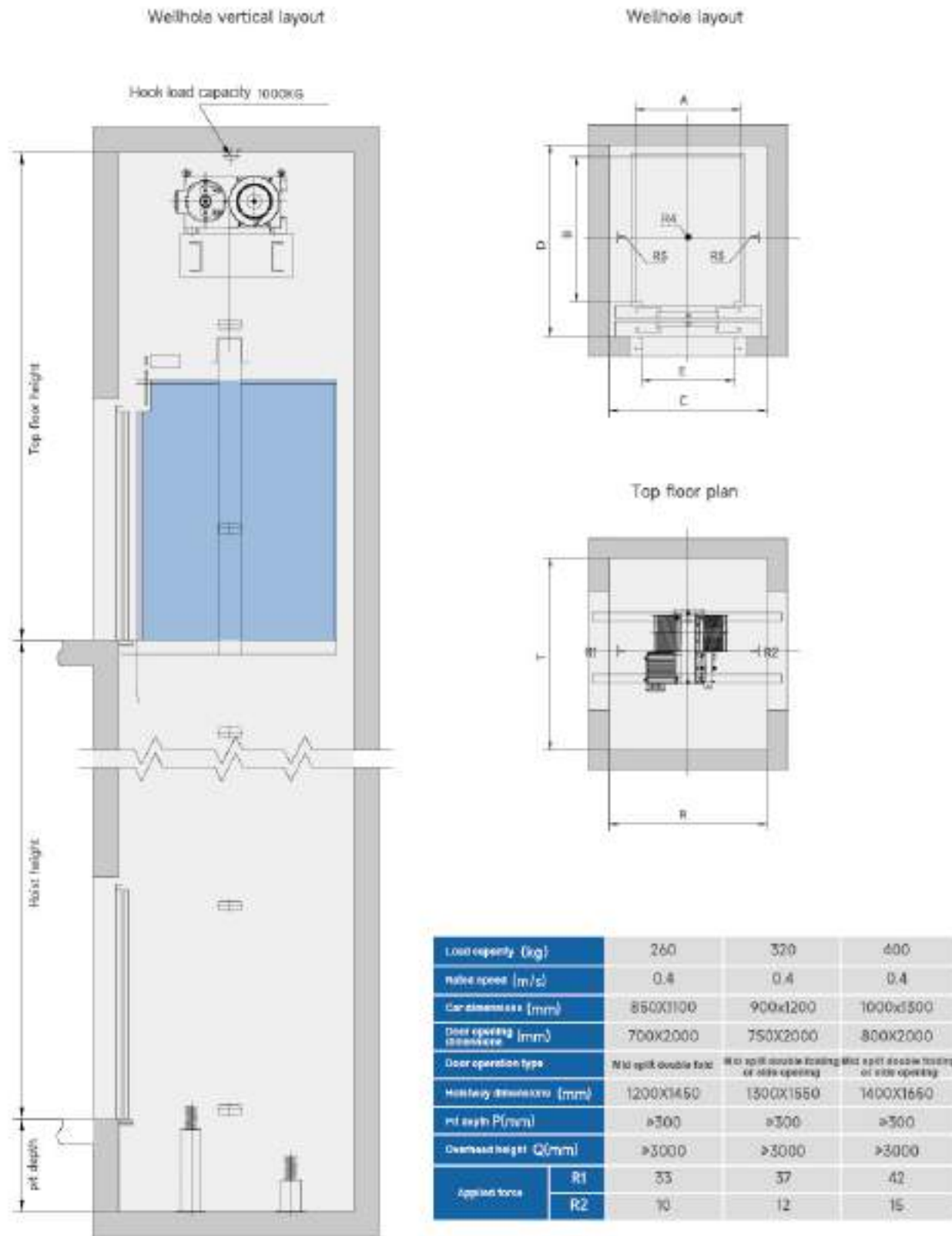
| Load (kg) | Speed (m/s) | Height of Overhead Floor (mm) (OH) | Depth of Pit (P) (mm) | Max. Rising Height (m) | Max. Number of Floor Stops |
|-----------|-------------|------------------------------------|-----------------------|------------------------|----------------------------|
| 320-400 | 0.4 | 3300 | 300 | 12 | 5 |
| | 0.4 | 3300 | 300 | 12 | 5 |

| No. | Load capacity & speed (passengers P) Kg-(m/s) | Power supply voltage | Machine room circuit breaker rated current (A) | | Machine room transformer capacity (kVA) | | Main power cable specification (mm ²) | | Overhead wire specification (mm ²) | | Hoisting installation (per unit) | | |
|-----|---|----------------------|--|-----------|---|-----------|---|-----------|--|-----------|---|---------------------------------------|------------------|
| | | | Single unit | Two units | Single unit | Two units | Single unit | Two units | Single unit | Two units | Heat dissipation (J · 10 ³ /h) | Water flow volume (m ³ /h) | min. dia. (Ø mm) |
| 1 | 320(4)-0.5 | 3Ø | 20 | 30 | 5 | 10 | 6 | 8 | 6 | 8 | 2.83 | 330 | 200 |
| | | | 380V | 20 | 30 | 6.3 | 10 | 6 | 8 | 6 | 10 | 3.46 | 400 |
| 2 | 400(5)-0.5 | 1Ø | 30 | 40 | 8 | 12.5 | 6 | 16 | 8 | 16 | 5.19 | 590 | 250 |
| | | | 220V | 30 | 50 | 10 | 16 | 6 | 16 | 8 | 16 | 6.05 | 690 |
| | 400(5)-1 | 50Hz | 30 | 50 | 10 | 16 | 6 | 16 | 8 | 16 | 6.05 | 690 | 250 |

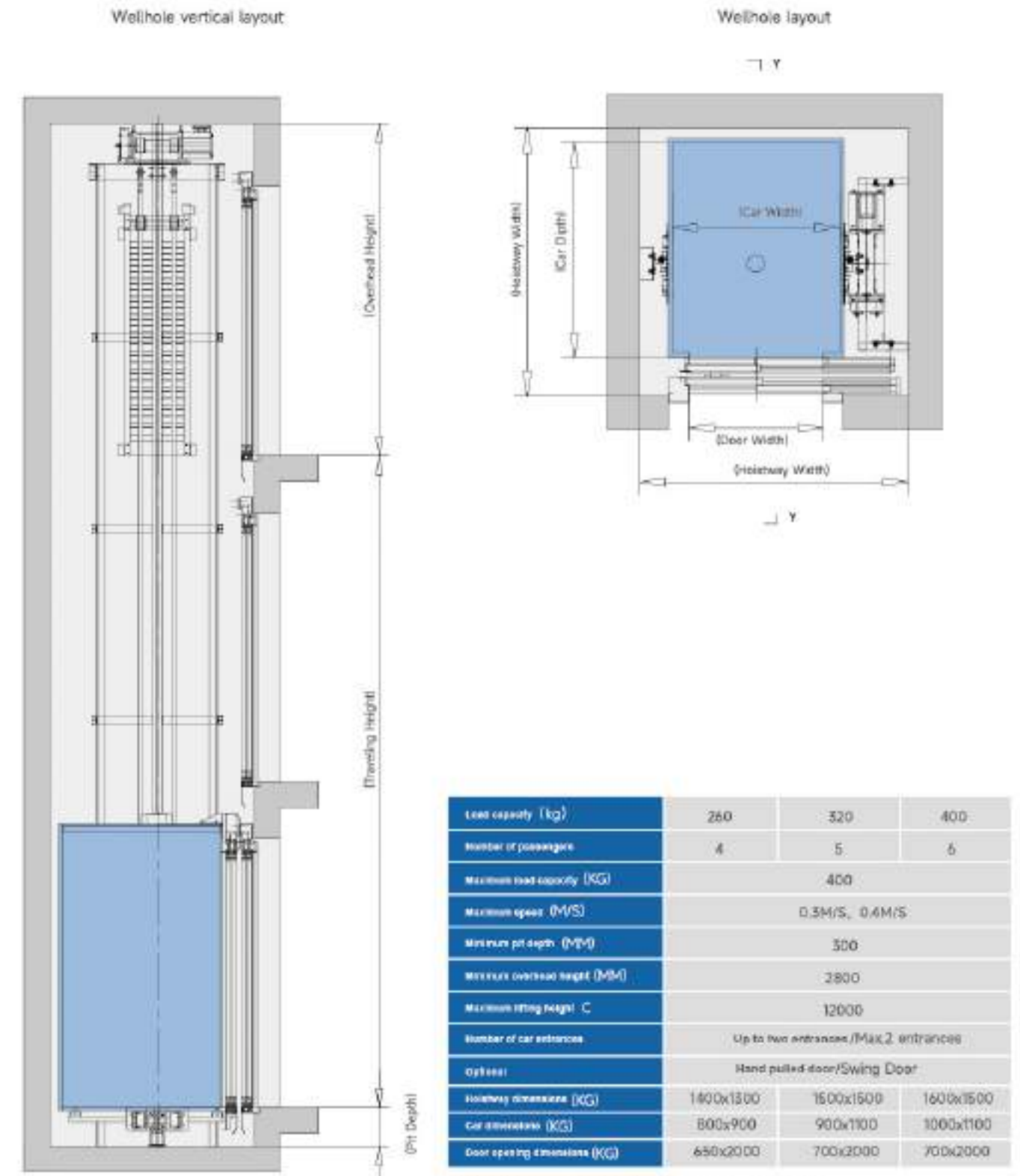
Note 2: Ventilation calculations assume ambient temperature 40°C. For higher temperatures, install cooling devices.

FORCE DRIVE VILLA ELEVATOR CONSTRUCTION SKETCHA

STEEL BAND STYLE VILLA ELEVATOR CONSTRUCTION SKETCH



Note: Dimensions are for design reference. Final dimensions subject to construction drawings provided at contract signing.



Note: Dimensions are for design reference. Final dimensions subject to construction drawings provided at contract signing.